



## From the President's Pen

It is not the easiest thing to come up with a worthwhile write up that would hopefully pique the interest of so many very knowledgeable people that are involved in gems, minerals and fossils. With the presentation in May dealing with dinosaurs and fossils it would be fitting to at least write a little something about one or the other. Mind you I have very little knowledge of dinosaurs or fossils, but I do know a little bit about dinosaur bone and its use in the lapidary arts!

So a majority of the dinosaur bones that I have come across and seen used for the lapidary arts have little to no character, where the bone is a dingy grey color with a possible showing of existence of some cell structure. When it comes to the lapidary arts it should be the artists desire to hunt for the character contained within the stone to be presented for all to admire. This is where dinosaur gem bone comes into play. Dinosaur gem bone will have color, cell structure and within those cells quite possibly fortified agatized cells (the fortified agatized cells can be seen with a magnifier). This type of material will break the hearts of the die-hard fossil finders knowing that a lapidary artist cut this up and the lapidary artist will crave for more.

The colors of the dinosaur gem bone can come in blue, red, black, yellow and green, and this material is not a \$5 slab of material. Here is something to consider when looking at a slab of dinosaur gem bone. If you can identify "X" amount of cabochons on the slab, divide that quantity of cabochons into the total cost of the slab. If the overall cost for each cabochon is a number you are willing to pay for one cabochon it is a smart buy. If the cost is

above your comfort zone, do your homework beforehand and see if the color or cell structure is worth the cost. There are cases out there where dinosaur gem bone is exquisite and to come across a piece of a specific color with a certain type of cell structure is well worth the cost. Lastly, look for fractures on the slab. Many times we get excited and overlook the fractures that are staring us right in the face. These fractures may reduce the overall number of cabochons that can be cut from the slab of material. Keep in mind the tips provided apply to all materials, not just dinosaur gem bone.

Hope to see you all at the next meeting to learn something great about dinosaurs and fossils from a very knowledgeable man.

— Glenn Fiala

## Vice President's Corner

In keeping with the focus on birthstones, the birthstone for May is the Emerald. Emeralds are a green variety of beryl, the same mineral that blue aquamarines are formed from, but the emeralds green hue comes from chromium and vanadium trace elements. (Enough of the science part). Not only is it May's birthstone but it is the official gift gem for celebrating the 20th and 55th years of marriage. It is the perfect gem for May as its color represents spring, fertility and new beginnings.

As I began to write this article I remembered a funny story when my daughter, Debi, and I went with the club to Nevada to hunt for emeralds. We searched diligently but with no luck. As we returned to our car to leave, Debi reached down by the tire and found a "pretty" rock. We were disappointed that we didn't find any emeralds, but agreed we still had a good time. The next morning, she reached into her pocket to look at the pretty rock only to turn it over and discover about 5 perfect little emeralds.

Now for some fun facts about the Emerald:

1. Emeralds are among the rarest of all gemstones (even harder to find than a diamond)
2. Emeralds are synonymous with royalty and romance: as they have been admired by emperors and kings for centuries.
3. They are an ancient symbol of eternal youth. That's why so many have been found inside Pharaohs' tombs. (I need to check to see if wearing one would be cheaper and more effective than the lotions I use.)
4. One of the largest uncut emerald gemstones ever found in the world is the Duke of Devon-

(Continued on page 2)

## Educational Program for May 8, 2018



Professor Richard Hilton of Sierra College, always a popular presenter at our meetings, will give a program on dinosaurs and fossils.

## Inside this issue:

Meeting Minutes	2
Meeting Minutes, Rookie	3
Media Day-May 1, Tailgater Reminder-June 9, Announcements	4
Shop Relocation Update	5
Show Raffle Thanks, Win a Week-long Trip to Camp Paradise!	6
Lapidary Classes, Calendar	7
Upcoming Shows, Co-Op Trips, Inventory Sale	8

shire Emerald which weighs 1,383.93 carats.

5. In 2011, an emerald pendant necklace owned by Elizabeth Taylor was sold for \$6.5 M.

6. For many centuries, emeralds were said to protect the wearer against memory loss. ( I don't think I could afford a large enough one to help me.)

7. If legends are to be believed, putting an emerald under your tongue can help you see your future. (Sure, my death because I would probable choke on it.)

For our Educational program, May 8th, we will have a presentation by Dick Hilton, Professor of Earth Sciences, Sierra College, Rocklin. He will be giving a presentation on Dinosaurs and Fossils. I am sure it will be very informative and entertaining. I hope to see you there.

— Jan Kessler

## MINUTES FOR ROSEVILLE ROCK ROLLERS EDUCATIONAL MEETING APRIL 10, 2018

**Call to Order** at 7:00 p.m. by President Glenn Fiala.

**Flag Salute** led by Junior Cannon Hansen.

**Present:** Members 69, Juniors, 5 and Guests 8.

**Sunshine** – a get well card was sent to Peggy McPherson

**Junior Activities** – Carole Kowalik worked with the Rookies on fracture and cleavage of rocks, followed by going outside and pounding rocks.

**Treasurer** – Terry Yoschak reported the deadline for show expenses to be turned in was during the meeting.

**Secretary** – Florence Brady reported 243 members.

**Vice President** – Jan Kessler reported the program for May will be a presentation by Dick Hilton on dinosaurs and fossils.

**CFMS Director** – We signed on as a society supporting the San Diego G & M Society's letter regarding the upcoming Desert Renewable Energy Conservation Plan (DRECP).

**Vests, tee shirts, patches** – Jan Kessler reported she has vests and shirts for sale. Please see her to get one.

**Field Trip** – Gene Doyle reported on an upcoming field trip planned for April 22<sup>nd</sup> to the Sugar Pine Reservoir area for nephrite Jade (blue/green in color), and magnetite. Notices of several upcoming CO-OP field trips and a tailgater have been sent to the membership. Gene plans a field trip to the Hawthorne, NV on either Oct. 6<sup>th</sup> or 13<sup>th</sup>. A Virgin Valley rendezvous will be held over the Memorial Day weekend. Members were encouraged to go on-line and look up the information regarding the sites open for fee collecting sites.

**Librarian** – Karla Shannon reported on 2 new books she has available for check out. One is on Jade and the other is on radioactive minerals.

**Show** – Jim Hutchings reported the show was very successful, even though the attendance was 100+ less than last year's record attendance. Next Show Committee meeting is Sept. 18<sup>th</sup>. He shared the feedback received from the Fairgrounds personnel, all very positive!

**Workers' Raffle Drawings** – 1<sup>st</sup> place winner: Mike Hunerlach who received the amethyst tower. 2<sup>nd</sup>, 3<sup>rd</sup> and 4<sup>th</sup> place winners were: Shirley Penman, Wes Arendtsen and Joseph Maddox. 5 winners received a vial of gold donated by Jim Hutchings. They were: Rob Nichols, Missy Dickson, Wiley Evans, Yelena Chukhreyeva and Albie Longueira.

**Lapidary Shop** – still having an issue with the water supply.

**Junior Advisor** – Carole Kowalik reported the meeting in May will be a presentation on the characteristic of luster.

**Drawings** – winners were: Member, Steve Smith; Junior, Ashley

Wittmeyer and Guest, Gene Engelbrite.

**Refreshments** – clipboard for signups is on the Greeter's Table.

**Lapidary Classes** – Chair Cathy Nelson reported no new classes.

**Old Business** – the tailgater will be on June 9<sup>th</sup>. Sign up with Jim Hutchings to reserve a space (Cost \$10). Green flyers were available for distribution. Activities for Juniors will be available along with rocks for sale.

**New Business** –

By-Laws and Standing Rules will be reviewed for revisions.

**Media Day** – on May 1<sup>st</sup>, @the Grounds (Fairgrounds). RRR has been invited to participate. Jim Hutchings is coordinating this with several members. We plan to display our history, activities and have 3 exhibit cases.

Possible site for Lapidary Shop – the FG has offered to rent us a building which could be converted for our lapidary shop's equipment. This proposal is in the discussion stage, with the RRR Board considering this move during the April 24<sup>th</sup> Board Meeting. The inside of the building will need to be designed for the equipment and a bathroom with toilet built. Many volunteers will be needed if this occurs along with sorting and moving the better quality rocks and moving the equipment.

**General Announcements** – refer to the bulletin for upcoming shows.

**Program** – an oral auction was conducted by Janet Longueira and Mike Hunerlach.

**Recess for Refreshments.**

**Adjournment** – Meeting adjourned at 8:45 p.m.

## MINUTES FOR ROSEVILLE ROCK ROLLERS BOARD MEETING APRIL 10, 2018

**Call to Order** at 8:55 p.m. by President Glenn Fiala.

**Present:** 11 board members, a quorum was present.

**Discussion** – preliminary discussion on possible relocation of the Lapidary Shop – equipment and saw shed. A list of items for discussion with the Fairgrounds and for the consideration of the Board was developed. A committee will be formed to coordinate this possible move, relocation of equipment and retrofitting of the building.

**Thank you letter** – Florence read a thank you letter from show vendor Lori Hughes.

**May 1<sup>st</sup> Media Day** – Jim Hutchings, Kim Loe, Nancy Hood, Jan Kessler and Florence Brady are available to be in the RRR booth area.

**Adjournment** - meeting was adjourned at 9:20 p.m.

Respectfully submitted,

Florence Brady, RRR Secretary

## MINUTES FOR ROSEVILLE ROCK ROLLERS BOARD MEETING APRIL 24, 2018

**Call to Order** at 7:00 p.m. by President Glenn Fiala.

**Roll Call** – Present all Officers and 8 Guests. A quorum was present.

**Minutes** – a motion was MSA to approve the minutes for the March 27, 2018 Bd. Mtg. and the Education and Board Meetings April 10, 2018.

**Treasurer** – Terry Yoschak reported the financial records for the Society for 2017 are ready for audit by Kim Fiala. The oral auction made \$1795, all equipment was sold.

(Continued on page 3)

**Correspondence** – Florence Brady sent a thank you note to show vendor Lori Hughes.

**Secretary** – Membership is 246.

**Vice President** – Jan Kessler reported the program for the May meeting will be a presentation by SC professor, Dick Hilton, on dinosaurs and fossils.

**Librarian/Historian** – Karla Shannon reported there was nothing new.

**Bulletin/Webmaster** – April 27<sup>th</sup> is the deadline for the May bulletin

**Field Trips** – Gene Doyle reported he had 12 attendees on the field trip to Foresthill area, on April 22<sup>nd</sup>. He is considering a field trip to the Cache Creek area north of the Casino for Jasper.

**Federation Director** – Mike Hunerlach reported we got recognized for signing the San Diego G & M Society's letter regarding the upcoming Desert Renewable Energy Conservation Plan (DRECP).

**Lapidary Classes** – Cathy Nelson reported there will be a 3<sup>rd</sup> silversmithing class for previous students. It was decided to notify members that RRR member Bill Simpson can hold classes on intarsia at his home. Limit is 2 or 3 students. Charges will include the \$5 Club fee.

**Show** – Jim Hutchings reviewed expenses and income shared on a report for the last 5 years. Totals for expenses and incomes for 2018 Show were as of April 24<sup>th</sup>. The Fairgrounds has our dates for next year, the 4<sup>th</sup> weekend in March. A motion was MSA for Jim Hutchings to be the Show Chair for the 2019 Show.

**Lapidary Shop** – The water supply is not on.

**Directors** – Rene' Hunerlach asked if an article on the Tailgater will be in the bulletin. Richard Kowaleski reported RRR member Lillian Kirtley still has lots of material for sale. This will be readvertised.

**Juniors** – Carole reported the April rookies meeting will be a presentation on luster.

**Old Business** –

**Tailgater** – Jim Hutchings will be the contact person for this event on June 9<sup>th</sup>. Should be no limit to the number of vendors. Flyers are available for distribution. Publicity will also be sent to other gem & mineral clubs, Facebook and Craigslist. We will wait until closer to the event, to decide if a Portapottie should be rented (cost \$100. ±).

**By-Laws and Standing Rules** – suggested revisions will be passed out at the end of the meeting, will be on the agenda for the May 22<sup>nd</sup> Bd. Mtg.

**Media Day** – May 1<sup>st</sup>. Jim is helping coordinate the event with the Fairgrounds. Times are 10-11 a.m. and 4-6 p.m. Set up will be Monday, April 30<sup>th</sup>. Will have Mineral ID, 4 display cases and a spinning wheel with polished rocks. A display of Placer gold will be there along with the Goldhounds. Seven members volunteered to help.

**New Business** –

**Scholarship for Camp Paradise** – the CO-OP drew RRR as the winner for a \$400 scholarship for a RRR member to attend Camp Paradise this summer. Procedure for determining how to do this was discussed. We will have a container for interested members to fill out a form and submit their name. During the June 10<sup>th</sup> Ed. Mtg. 5 names will be drawn, with the 1<sup>st</sup> name being the winner and the remaining 4 names on a wait/standby list.

**Lapidary Shop Relocation** – we have 2 options, move the Lapidary Shop/Trailer or move into a vacant shed type building on the Fairgrounds. Location for either is on the NW area of the Fairgrounds. A spread sheet for the income and expenses for the existing Lapidary Shop since 2006 was shared. A

motion was MSA to proceed with moving the shop and not retiring it from existence.

Jim read a letter he sent to the FG listing our concerns and needed improvements to the building, if we decide to rent this building.

Concerns regarding using this building were discussed, where/what is the electricity source, portable water available and sewer along with what could be used for heating and cooling the building? Discussed present use of the shop, are we making adequate use of the shop, charges for classes and present expenses. We do not have a rental fee for monthly rent of the building under consideration nor terms for a lease. Also, do not know the timeline determined by the FG. As there is not a toilet, just a sink, a bathroom would have to be built. We will have to find out what the insurance cost would be for the building.

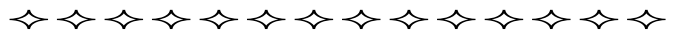
Discussed possible problems if the lapidary shop trailer was moved. Discussed options for moving the saw shed. A motion was MSA to proceed to investigate all costs associated with operating the shop at the new location and entertain a contract that the Grounds will provide. Under consideration could be a display case in which the club could sell items. Discussed the need to move the rocks and how the new site for the rocks could be prepared.

Further information and discussion will occur at the Bd. Mtg. after the Ed. Mtg. May 8<sup>th</sup> and at the Bd. Mtg. May 22<sup>nd</sup>.

**Next Board Meeting**, May 22, 2018

**Adjournment** – meeting was adjourned at 7:17 p.m.

Respectfully submitted,  
Florence Brady, RRR Secretary



## Rookie Rock Roller News



The Rookies will meet at 5:30 p.m. in the lapidary shop Tuesday May 8, 2018. At our last meeting, the juniors learned about cleavage and fracture of rocks and minerals. Jim Hutchings

brought his samples of both which showed the difference between the two. After the presentation, the Rookies headed outside with hammers, gloves and goggles to pound a number of different kinds of rocks to see how they might show the cleavage and fracture. The massacre of these rocks was utterly enjoyable. They all had such fun. The parents had fun watching, with some of them joining in.

At our meeting in May, we will focus on the characteristic of the luster of a rock or mineral. Join us for the fun.

Keep in mind, I am available to work with parents and rookies on badges. Just email me for an appointment. It takes about an hour to run through it. We can meet just about anywhere.

See you all there,  
Carole Kowalik, Junior Advisor  
(916) 871-0573 [home3004@gmail.com](mailto:home3004@gmail.com)

## Members' Reminder, Tailgater! - June 9

Once or twice a year, we offer members and friends of the Society the opportunity to sell and swap rocks, minerals, specimens, and self made jewelry items. You can offer miscellaneous items, supplies, and equipment you would like to dispose of. You can even give stuff away!

Since many of our members, do not run businesses, they do not have the business licenses and resale numbers necessary to sell at our show. We offer this opportunity to "garage sale" your goods, and you can do this up to twice a year without all the paperwork and such!

This year, the date is Saturday, June 9th with the sale for buyers starting at 9 AM. Usually, depending on weather and buyers, folks pack up and leave by around 3 PM. The fee is \$10.00 for a roughly 10 x 20 foot spot, just big enough to actually park your truck or car in, and literally sell off your "tail gate"!

We like to limit it to 3, 8 foot tables per spot! you can use the ground space to allow folks to go through bargain buckets, rummage boxes, and yard rocks if need be.

There may not be power, depending on where we are actually located this year. Due to the uncertainties of the status of our shop move, you will want to stay in touch with us as to where exactly we will hold this event. Usually, we hold it adjacent to the shop. Due to construction, we may be in the parking area, behind and above the shop. Depending on our proposed shop move, we may relocate to 200 Corporation Yard Road, West of the entrance to J gate at the old Fairgrounds, now known as "@ The Grounds".

We are not in conflict with the Mulch Event that caused us a great deal of grief last year!

Set up may begin at 7 AM, contact Jim Hutchings at the site for space assignment. Call me and let me know you will be vending, or if you have questions or trouble finding us, contact me at 530-367-5108 or on my cell phone at 916-995-7380.

**Roseville Rock Rollers** www.rockrollers.com

# TAILGATOR ROCK SWAP

**SATURDAY, JUNE 9, 2018**  
**9:00 AM - 2:30 PM** at the Lapidary Shop  
 Placer County Fairgrounds

**Come to buy, trade, swap, & show  
 Equipment, rocks & rock related items,  
 Lapidary, fossils, crystals**




**KIDS & FAMILY-FRIENDLY EVENT!**

**\$10 for a space — Free admission to public**  
 To sign up, contact Jim at 530-367-5108 or 916-995-7380  
**Rocks sold BY THE POUND in our large ROCK PILE !**

## Media Day - May 1

The members of the Roseville Rock Rollers are invited to an open house, for the "Grand Reveal" of the renovated Grounds, formerly the Placer County Fairgrounds. **May 1st, 4 to 6 PM** "@ The Grounds" 800 All America City Blvd. in Roseville.

The Rock Rollers will have a booth set up to display what we do as a non-profit organization in service to the community. The Mother Lode Goldhounds will be on hand to provide gold panning as they do at our show. Other "Marquee" events held at the Grounds, will be on hand to display what their events are all

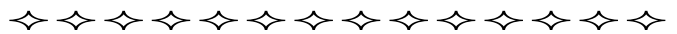


about. Feel free to come by as an invited guest of the Grounds, and stop by our booth in Jones Hall.

**Please wear your vest, shirt, or name badge to show them our support** for the

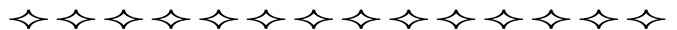
wonderful work they have done in bringing those grounds up to modern standards! Let them know how you feel about their work, and thank them for working with us on our show and lapidary shop!

— Jim Hutchings



## May Board Meeting

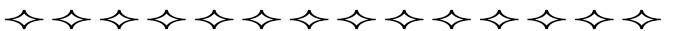
The meeting will be held Tuesday, May 22 at 7:00 PM in the club Lapidary Shop at the Fairgrounds.



## May Refreshments

Refreshments for the May 8 Educational meeting are to be provided by Connie Simpson, Jim deBlanc, Christina Rhodes, Martha & Rob Nichols, Gene Engelbrite, Janet Longueira, Jim Barton and Debbie Wick. Thank you all in advance!

**The refreshment sign-up sheet is at the entrance, on the Greeter's table.**



When you know of any member who is ill or has been hospitalized, please contact our Sunshine Chair, Heather Crane, at (818) 903-4433 or hmcrane7@gmail.com

## Shop Relocation Update

As you may have heard, the Phase 2 construction project on The Grounds will require the existing Lapidary Shop to be relocated to the northwest area of the Grounds. While discussing this move, a proposal was made to consider leasing an existing steel building in that same area. The administration actually liked the idea, and we have entered into negotiations for terms and lease costs.

Depending on the outcome of those negotiations, we may either have them move the existing shop to the new site, and reconnect it to electrical and water service. Taking a lease on the larger steel building, was the discussion of the April, regular, RRR Board Meeting under new business. We discussed the need to maintain a shop at all, considering the cost of the existing lease contract and operating costs. A motion was made to continue maintaining a shop, as a necessary feature and "anchor" to a thriving Gem and Mineral Society. The motion was approved by a unanimous vote of the Board.

There are still many issues of costs, and responsibilities for taking a lease on the new building. While the building is more than adequate for our needs, it will require some plumbing to install a restroom, and connect it to the existing sewer system. The current holding tank and service costs will be moved to fund the cost of a new lease. There is water service to the building. We will want to install some interior plumbing to move water to where we need it, and certainly to the lapidary machines to eliminate the recirculating pumps and buckets that require constant maintenance.

We will need to install interior wiring to support the electricity, to all our various equipment, along with GFI circuits since our equipment is in proximity to water. Our biggest concern at this time is, that the Power drop

to the adjacent building, which is scheduled to be demolished, are in the way of the new construction for the Phase 2 project. Very limited power is run between the two buildings, and we will require a much larger service box to feed all our needs for power. We have described this issue, and passed it on the Grounds staff, for review. We are suggesting that their construction engineering plans account for how this will be handled.

Currently, the building is operating with a very large swamp cooler, and what appears to be a propane gas furnace. The Society may wish to abandon both of those devices, and invest from Club funds, in one or two larger Heating/AC units to make the building more comfortable. Other than the large roll-up doors, the building is completely insulated. We may wish to insulate and seal those doors, or wall them and insulate.

The Grounds, has approved, in concept, to have us relocate our Show Trailer to the site, so as to eliminate the \$100 a month storage fee, rolling that into the new lease cost. The area behind the building, and up to an existing fence, will make a more than adequate rock storage area. We anticipate moving the saw shed to the site, to keep the larger saws and the noise and oil smell, out of the main shop. We will pull up the fencing we built behind the existing shop, and reuse the fence panels at the new site to enclose that area and gate it. The fence was built with the posts set in gravel, not cement, and should be easy to remove.

There will be a lot "all hands on deck" work parties to dismantle everything, and relocate it to the new site, clear weeds, lay down landscape cloth, spread gravel, chase pipes, and make construction improvements to the interior for a well designed shop. These things will require an investment from the Society to get this up and



*(Continued on page 6)*



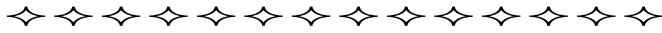
Map of proposed new shop location, and view from the front. The building to the right will be demolished.

(Continued from page 5)

running. However, the Board, Officers, and members in attendance all realized this is a big opportunity, to make the Roseville Rock Rollers Lapidary Shop, the "Rock Mecca" in the Northern Sacramento Valley and region! The Construction Manager is searching out the answers to the issues we raised, and will get back to us as soon as she has information. We do not have a timeline on when any of this may happen. If they can resolve the Power Service and Drop issue, and the costs to us, if any, are reasonable, we may be able to proceed soon.

The Board Motioned, Seconded, and Passed unanimously to continue forward in negotiations, determine costs and to entertain a vote on a final contract with the grounds if all terms are found to be acceptable to the Society and the Grounds.

*James Hutchings  
Facilities Transition Chair  
Roseville Rock Rollers*



## Show Raffle Thanks

The Raffle Chairs, Denise & Chris, want to give a BIG Thanks to:

**The businesses:**

Kingsley North  
Back Country Jewelry, Rocks & Minerals in Auburn  
Amber Collection in Auburn  
Ameritool, Inc.

**The Club Members:**

Dallas Lang  
Glenn Fiala  
Holly Hinkle  
Gene Doyle  
Hugh & Florence Brady  
Gloria Marie - Dragonfly Gemz Jewelry  
Rob Blazina & Karla Shannon - Rocklin Gems  
Kim Loe  
Albie & Janet Longueira  
Christina Rhodes  
Kymberly Andrews  
RRR crafty class  
And everyone that donated at the last meeting before the show, that in the chaos of the moment we didn't get your names.

And of course our **Show Vendors**, for all the fabulous items donated and used in the Raffle, Hourly Drawings, Auction and Members Auction. Thank you for your support & looking forward to next year.

*Denise Coyne & Chris Davis, Show Raffle Chairs*

## Win a Week-long Trip to Camp Paradise!

The CO-OP, Cooperative Field Trip Chairmen's Association, awarded the Roseville Rock Rollers a \$400 scholarship to the annual Earth Science Studies at Camp Paradise, for one week's registration. This scholarship is to be awarded to a RRR's society member, whose name is to be drawn at the June 12<sup>th</sup> educational meeting.

Further information on the earth science camp can be found on the CFMS website: <http://www.cfmsinc.org/ESSStudies/ESSoverview.htm>

The Roseville Rock Roller Board has decided to conduct the selection of a member to attend one week of the selected member's choice. The following information must be provided for interested members to be entered into the drawing selection:

Interested members are to fill out the form below or get one at the upcoming meetings, on May 8th and June 12th. The drawing for the winner will be held during the June 12th meeting. Four (4) further names will be drawn, with a wait list created for the 2nd -5th names, in the order so drawn.

<p><b>CONTEST FOR CAMP PARADISE - \$400 SCHOLARSHIP CFMS LAPIARY EARTH SCIENCE STUDIES – CLIPPER MILLS, CA</b></p> <p><b>I would like to be entered into the drawing for one (1) scholarship for either of the 2 weeks listed below. Please circle your preference.</b></p> <p><b>Week 1 August 26 – Sept. 1, 2018 or Week 2 Sept. 2 – Sept. 8, 2018</b></p> <p><b>Name</b></p> <hr/> <p><b>Phone #</b></p> <hr/> <p><b>Email</b></p> <hr/> <p><b>Return this form to either the May 8<sup>th</sup> or June 12<sup>th</sup> Education Meetings. Drawing will be at the June 12<sup>th</sup> Ed. Mtg. Five names will be drawn, first name drawn is the winner, the remaining four will be placed on a waiting list, in the order drawn.</b></p>
---

## Lapidary Classes

**Lapidary Classes** - Introduction to Shop Use & Cabochon making is \$10 per class for 5 classes or \$45 paid in full. Our Shop is staffed Monday & Wednesday nights 5 pm - 9 pm! Learn more about the Lapidary Arts & Cabochon Making. A DVD is available for viewing at the Shop for Cabochon Making.

Regular \$5 per day or \$20 monthly rates apply for lapidary shop use after Orientation/Introduction classes.  
 Large & Extra Large Saws: \$1 per slab for 18 inch saw & \$2 per slab for 24 inch saw for cutting large & extra large rocks.

**Crafty Days** - Crafty Days is an open get together/play day for anybody wanting to work on their craft while yakking and snacking! We always have fun! Bring whatever you are working on and a snack to share. We meet 1st and 3rd Mondays each month. No class or class fee, \$5 for use of the Shop is the only fee. 10-2pm at the Lapidary Shop.



**Crafty Days this month are May 7 and 21.**

**Our current schedule of classes is full. A new schedule of classes is being developed. As soon as it is available, information will be shared at the Educational Meeting and e-mailed.**

Please pre-register with Cathy Nelson, the Lapidary Classes Coordinator 925-321-2024 or canelson2@netscape.net

### Intarsia Classes (Offsite)

Bill Simpson, whose intarsia work was displayed at our latest RRR Show, is offering intarsia classes at his shop in Meadow Vista. The classes are two 1/2 days, schedule to be determined.

Fee is \$80.00 which includes \$5.00 to the RRR as a shop fee. Please contact Bill Simpson 408-799-3243.

I have attached a picture of the wonderful intarsia that Bill Simpson does (green one) and a picture that I did (brown one) in his class.

— Cathy Nelson



## May Calendar

Birthstone: Emerald



Sun	Mon	Tues	Weds	Thurs	Fri	Sat
For more class information, contact Class Coordinator: Cathy Nelson (925) 321-2024 Email: canelson2@netscape.net		1 <b>Media Day</b> 4-6 pm	2 Lapidary Shop 5:00-9:00 pm	3	4	5
6	7 <b>Crafty Day 10-2</b> Lapidary Shop 5:00-9:00 pm	8 <b>Meetings:</b> <b>Rookies 5:30 pm</b> <b>Club 7:00 pm</b>	9 Lapidary Shop 5:00-9:00 pm	10	11	12
13	14 Lapidary Shop 5:00-9:00 pm	15	16 Lapidary Shop 5:00-9:00 pm	17	18	19
20	21 <b>Crafty Day 10-2</b> Lapidary Shop 5:00-9:00 pm	22 <b>Board Meeting</b> 7:00 pm	23 Lapidary Shop 5:00-9:00 pm	24	25 <b>Virgin Valley</b> <b>Rock Hound</b> <b>Rendezvous</b>	26
27	28 <b>Shop Closed</b> 	29	30 Lapidary Shop 5:00-9:00 pm	31		

## Co-Op and Other Field Trips

### General Rules:

- These trips are open to all rockhounds who agree to abide by the AFMS Code of Ethics, the directions of the field trip leader and practice safe rockhounding.
- Call the field trip leader beforehand to sign up and for further information.
- Remember to wear your name badge and **sign in and out** with the field trip leader.
- Consent and Assumption of Risk Waiver of Liability form must be signed upon arrival at meeting site.

May 19-20	Crystal Mine, Dog Valley area Verdi, NV for Quartz Crystals (clear, rutilated, milky, smokey), Chrysocolla, Pyrite. Nevada County Gem and Mineral Society. Contact: Rich Cross, (530) 401-7066 or crosstechtrek@gmail.com
May 25-28	Virgin Valley, NV for opals, preserved and petrified wood, selenite, and opalite. Apache Tears, Carnelian, and colorful Agates and Jaspers are found in the region close by. Roseville Rock Rollers. Contact: Jim Hutchings, 530-367-5108 or 916-995-7380 jhutchings22@hotmail.com
May 26-28	Austin, NV area, for Graptolites and other fossils and rocks. Hot springs soaks. Fossils For Fun Society. Contact: Debbie Bunn 916-929-6665
June 2	Virgin Valley, NV for Opals and opalized/petrified wood. El Dorado Mineral & Gem Society. Contact: Fred Ott, 530-677-8440; fred@fredott.net; cell phone: 530-558-5387 or 530-558-5390
June 20	Little Bear Creek, Prineville, OR for Petrified wood, some blue vug agate and jasper, BLM rock collecting. Prineville show is before & Madras show after June 20th. Mother Lode Mineral Society. Contact: Kevin Kirschman 209-769-1502 kkirschman@prodigy.net.
June 21	Roaring Camp Mining Company, 13010 Tabeau Rd., Pine Grove 95665 for gold panning or rocks such as garnets, jasper, or quartz crystals. Eldorado County Mineral and Gem Society. Contact: Wayne Kuykendall 916-717-1902, Shirley Kuykendall 916-717-1901 or email kuykendall@pacbell.net for information, but register with Roaring Camp.
July 26-29	Davis Creek/Lassen Creek for obsidian, including Rainbow, Electric Blue, Pink Lady, Needles, and Mahogany Gold Sheen. CFMS Field Trips North. Contact: Dick Pankey (925)439-7509 dickpankey@juno.com
Sept 14-17	Black Rock Desert, NV for Jasper, Jasp-Agate, Petrified Woods, Calcite and Quartz Geodes, Large Apache tears. Sacramento Mineral Society & Mother Lode Mineral Society. Contact: Gina Malcolm 707-685-4006 animalnurse668@outlook.com. Misty Watson 209-480-3176 mistywatsonc21@hotmail.com limit 20 people

## Upcoming Northern California Shows

### May 5 - 6: JACKSON, CA

Amador County Gem & Mineral Society  
Kennedy Mine  
12594 Kennedy Mine Rd (off Hwy 49/88)  
Hours: 10 - 4 daily  
Contact: Cheryl Smith, (209) 296-4061  
Website: www.amadorgemandmineral.org

### August 4 - 5: SAN FRANCISCO, CA

San Francisco Gem & Mineral Society  
San Francisco County Fair Building  
(Hall of Flowers)  
9th Avenue & Lincoln Way, Golden Gate Park  
Hours: Sat. 10 - 6; Sun. 10 - 5  
Contact: Ellen Nott  
Email: ellen\_nott@yahoo.com  
Website: www.sfgemshow.org



This is the yearly "RRR Rockhound Rendezvous" which usually gets a full page write-up in our May Bulletin!

Due to lack of space in this issue, contact Jim Hutchings for the full trip write-up, or visit this page on the RRR website for all the details.

[www.rockrollers.com/trips/virginvalley.html](http://www.rockrollers.com/trips/virginvalley.html)

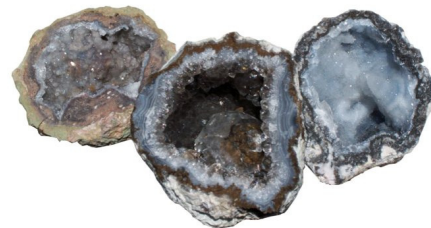
— Editor



## Inventory Sale

Long-time RRR member and vendor Lillian Kirtley continues to offer for sale at very reasonable prices her extensive inventory of polished and unpolished petrified wood, geodes, and other mineral specimens.

Phone Lillian at 530-878-2530 to make an appointment to visit at her Meadow Vista home.





ROSEVILLE ROCK ROLLERS GEM & MINERAL SOCIETY  
BULLETIN EDITOR  
P.O. BOX 212  
ROSEVILLE, CA 95678

Send exchange bulletins to  
above address

**\* First Class Mail \***



May 2018



the  
**ROLLIN'  
ROCK**

ROSEVILLE ROCK ROLLERS, INC.



MEMBER, CALIFORNIA FEDERATION OF MINERALOGICAL SOCIETIES  
MEMBER, AMERICAN FEDERATION OF MINERALOGICAL SOCIETIES  
VOL. 59 NO. 5 MAY 2018

EDUCATIONAL MEETING 2<sup>ND</sup> TUESDAY OF EACH MONTH, 7:00 PM  
EXECUTIVE BOARD MEETING 4<sup>TH</sup> TUESDAY OF EACH MONTH, 7:00 PM

EDUCATIONAL MEETING LOCATION: ROSEVILLE FAIRGROUNDS,  
GARDEN ROOM, 800 ALL AMERICA CITY BLVD., ROSEVILLE, CA

BOARD MEETING LOCATION: ROSEVILLE FAIRGROUNDS,  
LAPIDARY SHOP TRAILER BEYOND GATE "C" PARKING LOT

*Changes and exceptions will be published in the bulletin.*  
**GUESTS AND VISITORS ALWAYS WELCOME**