



From the President's Pen

I hope that everyone got to enjoy the eclipse one way or another. It is a spectacular sight to take in and be a part of. I imagine it would have been even more exciting to be in the path of totality. Not certain if many folks were aware but there was supposedly a lunar eclipse this past month also. Of course this could only be seen in the European region, but still pretty interesting to have two celestial events in a single month.

Well, what is happening with our club?! It is that time of year again to nominate and elect our officers. We have an upcoming Co-op field trip that our club is leading, which will be in the Lovelock, NV area.

The amber presentation for September should be very informative. Andrew (the Amber Shop owner in Auburn, CA) has several museum grade pieces in his shop that I recommend everyone should ask him about. Also ask Andrew about several of his pieces being photographed and presented in some very prestigious books. So if you have any question about amber, Andrew would be a great source.

I hope to see you all next month at our meeting. Try and stay cool and be careful if you are running around out there in this heat.

— Glenn Fiala

Vice President's Corner

Hi, I'm Jan Kessler, the new Vice President for the remainder of this year. For those of you who may not know the name, you might recognize me as the person usually selling RRR Vests and Tee Shirts for the club.

Part of the Vice President's duties is to arrange for the speaker for the monthly RRR meetings. Bob Wilson made it very easy for me for the September 12th meeting as he had already booked a great speaker on AMBER.

AMBER, with many uses such as a baby teething necklace, to encased bugs, to one of a kind jewelry. Our speaker for the September 12th RRR meeting, is Mr. Andrew Cholewinski, the owner of Amber Collection, Inc. which is located in downtown Auburn, CA.

Mr. Cholewinski relocated to Auburn in 2010 after 18 prior years of doing business in Redondo Beach, CA. He has been cutting and polishing AMBER for 24 years which includes selling at trade shows and directly to collectors. His focus is on the search for fossils. He also has had many of his fossil findings published in books and magazines.

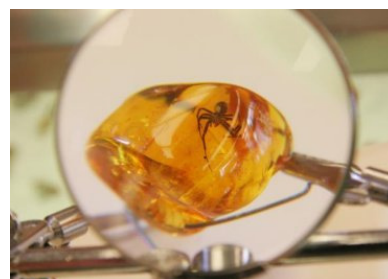
Hope to see you there.

— Jan Kessler

Educational Program for September 12, 2017 At the Maidu Center



Andrew Cholewinski from the Amber Collection in Auburn talks about AMBER



See Page 5 for a map to the Maidu Center

Inside this issue:

Meeting Minutes, Announcements	2
New Members, Rookie News, Lapidary Class Coordinator Needed	3
Lapidary Classes, Avoiding Vise Scratches	4
Map to Maidu Center, Instructions	5
On the Color of Smoky Quartz	6
Calendar, The Beautiful Fukang Meteorite	7
Upcoming Shows, Field Trips Listing	8

MINUTES FOR ROSEVILLE ROCK ROLLERS EDUCATIONAL MEETING AUGUST 8, 2017

Call to Order at 7:00 p.m. by President Glenn Fiala.

Flag Salute.

Present: 32 Members, 6 Juniors and 4 Guests.

Introductions by guests.

Recess for Refreshments.

Business meeting started.

Sunshine Report – a sympathy card was sent to Bill Usrey.

Juniors – Carole Kowalik reported there were 6 Juniors at the Rookies meeting who played the Rockhound game. Cannon Hansen will give a presentation on turquoise at the Sept. Rookies meeting.

Secretary – Florence Brady reported we have 268 members.

Treasurer – Terry Yoschak reported the financial records for the 2017 Show are ready for audit. Kim Fiala volunteered to do the audit. We are still waiting to hear from the new management group for the Fairgrounds regarding payments for renting Lauppe Hall and rental fees for the Lapidary Shop.

Programs – Vice President, Bob Wilson, reported the September Educational Meeting will be a presentation on amber. We will meet in rooms 1 & 2 at the Maidu Community Center.

CFMS – Director Mike Hunerlach will attend the meeting in November in Visalia. Deadline for applications for Camp Paradise is August 10th. Mike reported Jim Brace-Thompson, Juniors Advisor Chair for CFMS, has resigned after serving for 20 years. He will still be helping AFMS as the Juniors Program Advisor.

Tee Shirt, Vests, Patches – see Jan Kessler to purchase or to request an item.

Field Trips – Gordon Standlee, RRR Field Trip Leader, was absent. Jim Hutchings discussed the upcoming field trips to the Lovelock, NV area on Sept. 30th and Oct. 1st.

Librarian – Karla Shannon reported she was accepting returned books and magazines. She will have items for checkout at the Sept. Ed. Mtg.

2018 Show – Jim Hutchings discussed updated information regarding the renovations to the Fairgrounds and his correspondence with the Placer Valley Tourism group. Our show dates are “booked”. New chairs and tables are to be available. Electricity is to be updated in Jones Hall. To be determined is whether or not parking fees will be charged. Gloria Marie needs help with PR for internet sites. Lynn Dowling and Jan Kessler volunteered to help Gloria. Sept. 19th will be the first meeting for the 2018 Show Committee.

Lapidary Shop – Mike Hunerlach reported Duncan Penman and Vern Deck will be instructors when substitutes are needed.

Refreshments – signups for the fall meetings are being taken.

Lapidary Classes – no report, Tom Rooney was absent.

Old Business – to be determined is the meeting site for the October 10th Ed. Mtg.

New Business – none

Upcoming Shows – listed in the bulletin.

Announcements – Cathy Nelson, who is coordinating the Crafty days, announced there will not be a meeting on Labor Day (1st Monday in September).

Drawings – winners were: Member, Rene Meyer; Junior, Mia Wittmeyer and Guest, Hailee Deal.

Sales – Hugh Brady reminded members to take a look at the items on the sales table.

Show and Tell – the following members shared items: Kymberly Andrews, Stan Bollinger, Debbie Bunn, and Bob Wilson.

Out-going Vice President – Glenn thanks Bob Wilson for his service as Vice President. As Bob is moving to Oregon, another Vice President Officer is needed. Glenn asked for a volunteer. After the meeting, Jan Kessler volunteered to serve as VP for the remainder of 2017.

Adjournment – meeting was adjourned at 8:10 p.m.

MINUTES FOR ROSEVILLE ROCK ROLLERS BOARD MEETING AUGUST 8, 2017

Call to Order at 8:15 p.m. by President Glenn Fiala.

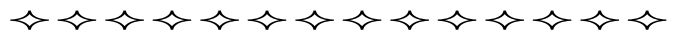
Present: 8 officers, a quorum was present.

Membership Applications – a motion was MSA to accept the membership applications for Phillip Davis, Jo Ann Ewasko and Ashley Wittmeyer.

Adjournment – meeting was adjourned at 8:18 p.m.

Respectfully submitted,

Florence Brady, RRR Secretary



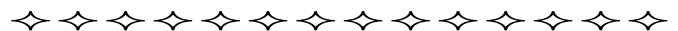
September Show Meeting

The first show committee meeting for our annual show in March 2018 starts at 7:00 p.m. in the Lapidary Shop on Tuesday, September 19. We encourage members to attend, learn how the show chairs are getting ready for this huge, annual show! Learn how you can help out one of the chairpersons before and during the show. Your input and help will be greatly appreciated. The Show Committee meets on the 3rd Tuesday of the month, in September, November, January, February and March. This is a way for you to be active in the society, meet other RRR members and just have fun with the show!

— Jim Hutchings, 2018 Show Chair

September Board Meeting

The meeting will be held Tuesday, September 26 at 7:00 PM in the club Lapidary Shop at the Roseville Fairgrounds.



PR for Next Year's Show

We desperately need help, especially on the social media side of things. We could use a couple of people to help post on Facebook and other media to publicize our show.

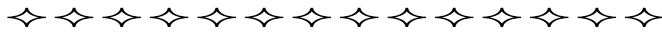
If you can help, please contact Gloria Marie at (916) 216-1114 or gloriarosevilleroollers@gmail.com.

September Refreshments



Refreshments for the September 12 Educational meeting are to be provided by Stan Bollinger, Sally Garcia, Rolf & Kymberly Andrews, Adam Meyer, Jan Kessler, Doug & Sami LaRocca, Lynn Dowling and Ashley &

Mia Wittmeyer. Thank you all in advance!



Lapidary Class Coordinator Needed!

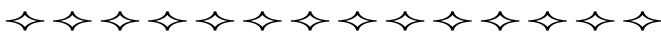
We would like to continue the practice of providing classes for our members, but this requires a volunteer to be the Lapidary Class coordinator. The Lapidary Class coordinator does not necessarily need to be the instructor for each and every class, or any classes for that matter.

The duties for the Lapidary Class coordinator include:

- setting up the class date and time with an instructor
- ensuring the lapidary shop is opened and properly closed upon completion of the class
- collect funds for the use of the lapidary shop during the class
- provide sign-up sheets for various classes during our monthly education meeting

It would be a great loss to no longer provide the opportunity for others to learn new lapidary skill sets, so I truly hope that someone in the club can spare the time to take over as the Lapidary Class coordinator.

Contact Glenn Fiala, 916-878-1504



Thank You for These Recent Donations

Greg Deal donated and installed LED lights for the Lapidary Shop ceiling fixtures.

Jan Kessler donated light bulbs for equipment at the Lapidary Shop.

Carole Lockhart donated an agate bead necklace for our door prize drawings.

Kymberly and Rolf Andrews donated a pyrite on quartz specimen, necklaces, and wire wrapped cabochon pendant necklaces.

Former RRR member Richard Krug donated several gem and mineral books to our library.

Welcome New Members:

Phillip Davis
JoAnn Ewasko

Welcome New Junior Member

Ashley Wittmeyer

Rookie Rock Roller News



The Rookies will meet at 5:30 p.m. in the Maidu Center again at 1550 Maidu Drive, off of Rocky Ridge Drive in Roseville. Last month, we entered the double doors and veered left. This

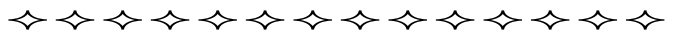
time, go through the double doors and straight through the second set of double doors to the back of the building. The door is on the left. Look for the Rookies sign. We will be in Room #2. We will join the adult meeting at 7:00 in the room attached.

At our last meeting, we played the Rock Hound game. The Notley Crew won the first round. The remaining juniors beat out the adults. (It is not our fault. Old people have memory issues.) After the game, we enjoyed all the desserts that could fit on one or two plates.

At our meeting in September, Cannon will present turquoise. After the presentation, we will have a little clean fun (since it is indoors).

I hope to see you all there,
See you all there,

Carole Kowalik, Junior Advisor
916-705-2124 home3004@gmail.com



Sunshine

When you know of any member who is ill or has been hospitalized, please contact our Sunshine Chair, Heather Crane, at (818) 903-4433 or hmcrane7@gmail.com

See Page 5 for a map to the Maidu Center

Lapidary Classes

Lapidary Classes - Introduction to Shop Use & Cabochon making is \$10 per class for 5 classes or \$45 paid in full. Our Rock Hound Oasis is staffed Monday & Wednesday nights 5 pm - 9 pm! Learn more about the Lapidary Arts & Cabochon Making. A DVD is available for viewing at the Shop for Cabochon Making.

Regular \$5 per day or \$20 monthly rates apply for lapidary shop use after Orientation/Introduction classes.

Large & Extra Large Saws: \$1 per slab for 18 inch saw & \$2 per slab for 24 inch saw for cutting large & extra large rocks.

Crafty Days - Crafty Days is a get together for anybody wanting to work on their craft while yakking and snacking! We always have fun! Bring whatever you are working on and a snack to share. We meet 1st and 3rd Mondays each month, 10-2pm at the Lapidary Shop. **No Crafty Day on Labor Day. Crafty Days resume September 18.**

Crafty Days are open play days. No class or class fee, \$5 for use of Shop is the only fee. Cathy Nelson is coordinating our Crafty Days.



Sign up at the meetings for:

Mineral ID with Jim Hutchings

TBA Sign-up for next offering.

Learn the necessary tools, books & techniques of identifying rocks & minerals! Fee: \$25

Stereo-Microscope Workshop

TBA Sign up for next offering. Hands-on workshop on identifying gems and minerals, detecting flaws in lapidary material, and enjoying the beauty of smaller specimens. Scopes provided or bring your own. Fee: \$5

Remember - We ask that you sign up ahead of time for classes. For our classes listed as by appointment or TBA, we build the class based on sign-ups & instructors schedules. In other words, we make the date when we have sign-ups.

Shop Clean-up is something everyone does!

Use the full surface of the belts - to prevent premature wearing. A DVD is available for viewing at the Shop for Cabochon Making.



Avoiding Vise Scratches

Bench Tips – By Brad Smith



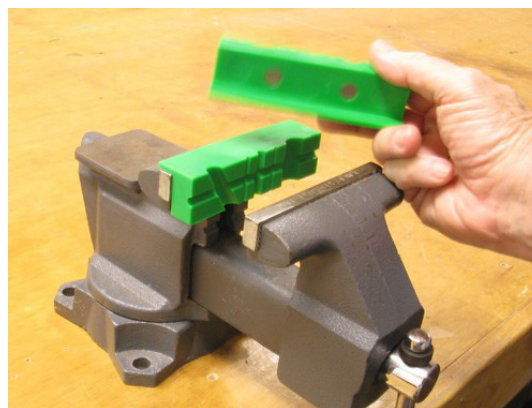
Any scratches on your jewelry work take extra time and effort to remove, so it makes sense to avoid scratches when using a bench vise. A quick fix is to use a scrap of leather or plastic on each side of your piece as you close the vise.

A little more convenient are plastic jaw protectors (shown on the right) that magnetically attach to the jaws (see Amazon.com for bargains).

And, if your vise has replaceable jaws, you can make a duplicate set of jaws from high density plastic such as Nylon or Delrin. These not only hold pieces securely without worry of scratch marks but are handy for bending sheet metal as well.

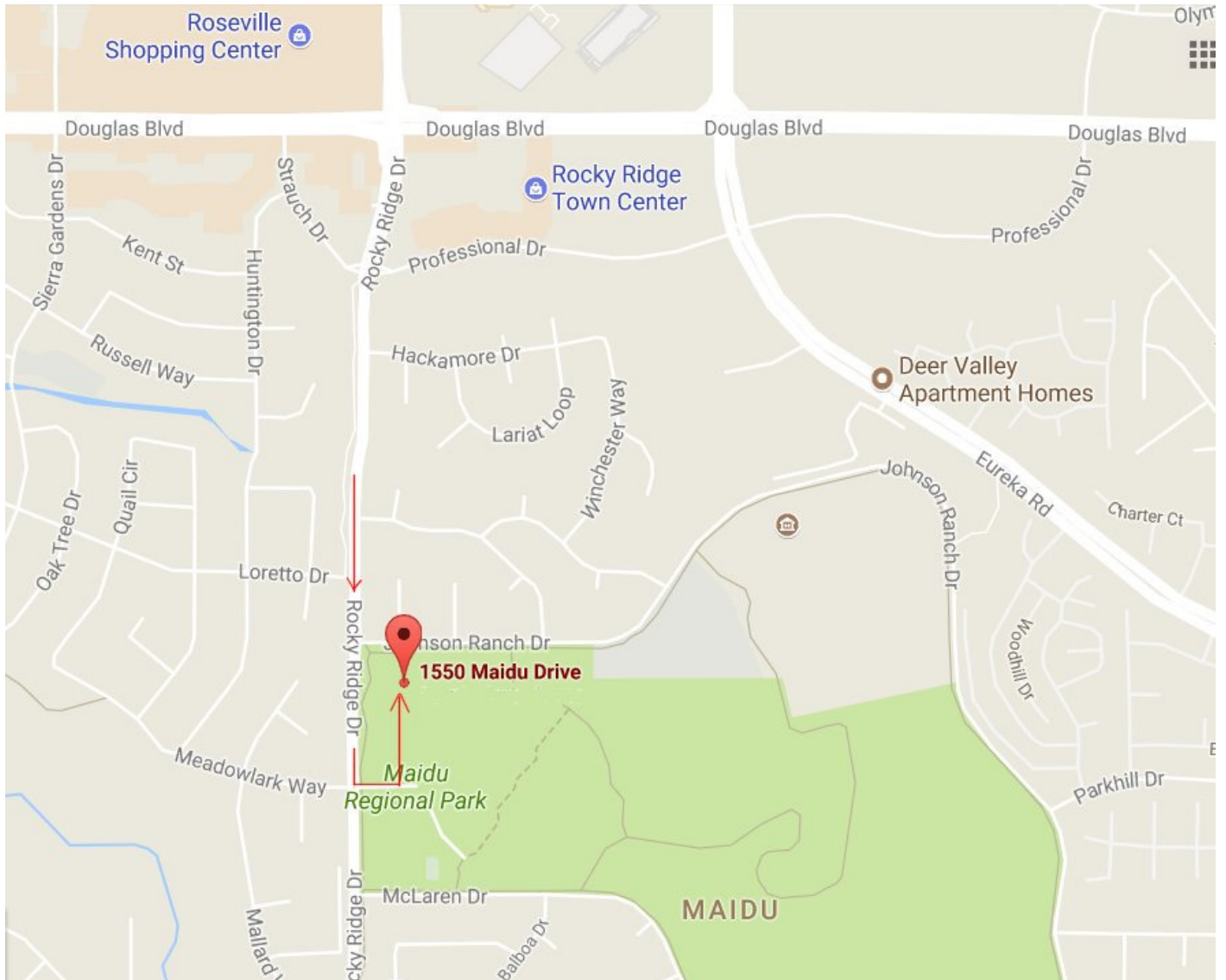
To make them, just remove the steel jaws and use them as a template. Cut two pieces of plastic from a

1/2 inch sheet of scrap. Then clamp the steel jaw over the plastic and drill through the steel side into the plastic. Finally, use a larger drill to countersink the plastic for the screw heads. Plastic can be obtained from the scrap bin at a local plastics store, can be purchased online, or can be repurposed from an old kitchen cutting board.



<http://www.bradsmithjewelry.com/>
Brad's Bench Tips books are available on Amazon

Map to Maidu Center



The Maidu Community Center is where our Educational Meetings will be held, at least through September.

Address is 1550 Maidu Dr. Roseville, CA 95661

South of Douglas Blvd. from Rocky Ridge Dr. enter Maidu Dr. to Maidu Center. Refer to map.

On Rocky Ridge Dr., south of Douglas Blvd. turn at the traffic light, onto Maidu Dr. At the T intersection on the driveway, turn left, drive to the 2nd building on the left. This is the Maidu Community Center. Parking is either side of the main driveway.

Enter the building and go straight, through the Lobby area to the hallway on the Left. We are in a double room, # 1 and # 2. Look for yellow RRR signs. The Juniors meeting is at 5:30 in Room #2, Adult meeting is at 7:00 in both Rooms #1 & #2.

On the Color of Smoky Quartz

By Paolo Sanchez, Junior Member of the Pasadena Lapidary Society



Paolo Sanchez

perweights.

However, in the scientific community of mineralogy, one thing about this mineral remains of interest: the color. As implied by the name, the color of smoky quartz is, well, **smoky** - ranging from a light tint of brown to a blackish hue. While many people would consider the mineral's color to be rather drab, the origin of this color is actually unique in the mineral world.



Smoky Quartz with Amazonite

its color from a rather surprising source.

Smoky quartz is known to form in granitic pegmatites, associated with different minerals and gemstones including tourmaline, cleveite, and aquamarine. What is unique about these pegmatites is that they contain a significant amount of radioactive elements, particularly the elements uranium, radium, and thorium. Because these elements decay from their radioactivity, they emit gamma rays that are then absorbed by the surrounding rock. When quartz (particularly clear quartz) is in close proximity to these elements, the gamma radiation that is ab-

The practical mineral collector would've most likely encountered some of the mineral smoky quartz at least one time in his or her life. Whether it would be at gem shows or at rock-hounding trips, this crystal-line form of silicon dioxide has not really been a major interest of rockhounds. Usually, smoky quartz would just be sold as a faceting material for beginners, or as crystals serving as decor or pa-

sorbed causes aluminosilicate ion impurities [AlO₄] within the quartz to lose an electron, forming a neutral, aluminosilicate compound which absorbs multiple colors of light.

This coalition between chemical impurities and radioactivity eventually results in the unique, brown to blackish color that gives smoky quartz its name. Fortunately, there is no need to worry about the radioactivity that smoky quartz is exposed to, for the amount of radioactivity in the quartz is so minuscule that it doesn't cause any damage to living species nor the surrounding environment.



Smoky Quartz from Minas Gerais, Brazil

While this rather common species of silicon dioxide is often underestimated in most of the rock collecting community, the formation of color in smoky quartz still stands as a unique and relatively rare process in the mineral world.

Works Cited:

- Holden, Edward F. Color of Smoky Quartz and Amethyst. Color Smoky Quartz and Amethyst. N.p., n.d. Web. 1 Nov. 2016
- Nassau, Kurt. Color in Minerals. Color in Minerals. N.p., n.d. Web. 2 Nov. 2016.
- Smoky Quartz. The Quartz Page: Smoky Quartz. N.p., n.d. Web. 1 Nov. 2016.
- Webster, Robert. Practical Gemmology: A Study of the Identification of Gemstones, Pearls, and Ornamental Minerals. New York: Arco Pub., 1978.

From Rockhound Ramblings, April 2017



Smoky Quartz Crystal from Australia. Photo from mindat.org

The Beautiful Fukang (careful now!) Meteorite

The Fukang meteorite, believed to be some 4.5 billion years old, which is as ancient as Earth itself, was unearthed near a town of the same name in China, in 2000. It is a pallasite, a type of meteorite with translucent golden crystals of a mineral called olivine embedded in a silvery honeycomb of nickel-iron.

It's a gorgeous meteorite, and possibly the most stunning extraterrestrial piece of rock man has ever seen. The Fukang meteorite was found by a hiker. The man had often stopped and had lunch on this giant rock, and he always wondered what the metal and crystals were. He finally took a hammer and chisel and broke some pieces off, which he sent to the USA to confirm that it was a meteorite.

The original meteorite weighed just over a thousand kilograms, but the rock was so brilliant that everybody wanted a piece of it. Since then it has been divided into dozens of thin slices and auctioned or distributed around the world.



*From Granite State Geologist, 3/16
Via The Rockhounder, 5/16*



September Calendar

Birthstone: Sapphire



Sun	Mon	Tues	Weds	Thurs	Fri	Sat
					1	2
3	4  Shop Closed	5	6 Lapidary Shop 5:00-9:00 pm	7	8	9
10	11 Lapidary Shop 5:00-9:00 pm	12 Meetings: Rookies 5:30 pm Club 7:00 pm	13 Lapidary Shop 5:00-9:00 pm	14	15	16
17	18 Crafty Day 10-2 Lapidary Shop 5:00-9:00 pm	19 SHOW Meeting 7:00 pm	20 Lapidary Shop 5:00-9:00 pm	21	22	23
24	25 Lapidary Shop 5:00-9:00 pm	26 Board Meeting 7:00 pm	27 Lapidary Shop 5:00-9:00 pm	28	29	30 Lovelock, NV Field Trip →

Upcoming Northern California Shows

September 23 - 24: LODI, CA

Stockton Lapidary & Mineral Club
Lodi Grape Festival Grounds, 413 East Lockford Street
Hours: 10 - 5 daily
Contact: Jerold Kyle, (209) 368-9411
Email: jeroldkyle@yahoo.com
Website: www.stocktonlapidary.com

September 23 - 24: MONTEREY, CA

Carmel Valley Gem & Mineral Society
Monterey Fairgrounds, 2004 Fairgrounds Road
Hours: 10 - 5 daily
Contact: Janis Rovetti, (831) 372-1311
Email: janis12@sbcglobal.net
Website: www.cvgms.org

September 23 - 24: REDWOOD CITY, CA

Sequoia Gem & Mineral Society
Community Activities Building, 1400 Roosevelt Avenue
Hours: 10 - 5 daily
Contact: William Spence, (408) 398-7502
Email: bill.spence777@sbcglobal.net
Website: www.sequoiagemandmineralsociety.org

October 7 - 8: GRASS VALLEY, CA

Nevada County Gem & Mineral Society
Nevada County Fairgrounds, 11228 McCourtney Road
Hours: 10 - 5 daily
Contact: Anita Wald-Tuttle, (530) 277-6195
Email: anitaw1t3@gmail.com
Website: www.ncgms.org

October 21 - 22: PLACERVILLE, CA

El Dorado County Mineral & Gem Society
El Dorado County Fairgrounds, 100 Placerville Drive
Hours: 10 - 5 daily
Contact: (530) 676-2472
Email: info@rockandgemshow.org
Club Website: www.eldoradorocks.org

October 21 - 22: SANTA ROSA, CA

Santa Rosa Mineral & Gem Society
The Veterans Memorial, 1351 Maple Avenue
Hours: Sat 10 - 6; Sun 10 - 5
Contact: Jolene Coon
Email: santarosarockshow@hotmail.com
Website: www.srmgs.org

October 28 - 29: LOS ALTOS, CA

Peninsula Gem & Geology Society
Los Altos Youth Center, One North San Antonio Road
Hours: 10 - 5 daily
Contact: Steve Jobe, (408) 834-5384
Email: steve_job@sbcglobal.net
Website: www.pggs.org

October 28 - 29: SACRAMENTO, CA

Sacramento Mineral Society
Scottish Rite Temple, 6151 H Street
Hours: 10 - 5 daily
Contact: Alyssa Mesiznger, (916) 662-5819
Email: gemshow@sacramentomineralsociety.org
Web Site: http://sacramentomineralsociety.org

November 3, 4 & 5: EUREKA, CA

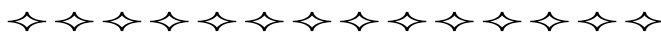
Humboldt Gem & Mineral Society
Redwood Acres Fairgrounds, 3750 Harris Street
Hours: Fri 9 - 6; Sat 9 - 6; Sun 10 - 5
Contact: Toni L Tyson, (707) 502-9574
email: bluiis911@msn.com

November 4 - 5: CONCORD, CA

Contra Costa Mineral & Gem Society
Centre Concord, 5298 Clayton Road
Hours: 10 - 5 daily
Contact: Mary Hicks, (925) 289-0454
Email: maryhicks@comcast.net
Website: (web site temporarily under construction)

November 11 - 12: YUBA CITY, CA

Sutter Buttes Gem & Mineral Society
Yuba-Sutter Fairgrounds - Franklin Hall
442 Franklin Avenue
Hours: Sat 10 - 5; Sun 10 - 4
Contact: Karen Horita, (530) (916) 677-6696
Email: horita@comcast.net
Website: www.sutterbuttes.net



Co-Op and Other Field Trips

SCHEDULE for 2017	
Sept. 17	Clear Creek Management Area for Plasma agate, Peridotite, Serpentine, Chromite, Jadeite. Santa Cruz Mineral & Gem Society. Contact: Dale Bruce, dalebruce88@gmail.com, (408) 605-2081
Sept. 30, Oct. 1	Lovelock, NV area, for petrified wood, emeralds, magnetite, druzy quartz, common opal. Roseville Rock Rollers G & M Society. Contact: Jim Hutchings, (530) 367-5108 (H) (916) 995-7380 (C) jhutchings22@hotmail.com
Sept. 30, Oct. 1	Fallon, NV for Agates, jaspers, petrified wood and more. Calaveras Gem & Mineral Society. Contact: Brad Becker (209) 586-2144 beckerbk@sbcglobal.net
Oct. 13-14	Crystal Mine, Dog Valley area, for Quartz Crystals (clear, rutilated, milky, smoky), Chrysocolla, Pyrite. Nevada Co. GMS. Contact: Rich Cross, (530) 401-7066 or crosstechtrek@gmail.com
Oct. 28	Smith Valley, NV Wilson Canyon, for petrified wood, moss plume agates, jaspers, gypsum, calcite. El Dorado M & G Society. Contact: Thaleia Georgiades (530)957-3800 thaleia@thaleia.com

ROSEVILLE ROCK ROLLERS GEM & MINERAL SOCIETY
BULLETIN EDITOR
P.O. BOX 212
ROSEVILLE, CA 95678

Send exchange bulletins to
above address

*** First Class Mail ***



September 2017



the
**ROLLIN'
ROCK**

ROSEVILLE ROCK ROLLERS, INC.



MEMBER, CALIFORNIA FEDERATION OF MINERALOGICAL SOCIETIES
MEMBER, AMERICAN FEDERATION OF MINERALOGICAL SOCIETIES
VOL. 58 NO. 9 SEPTEMBER 2017

EDUCATIONAL MEETING 2ND TUESDAY OF EACH MONTH, 7:00 PM
EXECUTIVE BOARD MEETING 4TH TUESDAY OF EACH MONTH, 7:00 PM

EDUCATIONAL MEETING LOCATION: ROSEVILLE FAIRGROUNDS,
GARDEN ROOM, 800 ALL AMERICA CITY BLVD., ROSEVILLE, CA

BOARD MEETING LOCATION: ROSEVILLE FAIRGROUNDS,
LAPIDARY SHOP TRAILER BEYOND GATE "C" PARKING LOT

Changes and exceptions will be published in the bulletin.
GUESTS AND VISITORS ALWAYS WELCOME