



From the President's Pen

I hope everyone has had a wonderful Christmas and looking forward to a Great New Year! The year begins anew and I have not had the opportunity to go rock hounding in the wilds once last year. The only rock hounding I have been able to do is pick up that special rock from each show I have attended throughout the year. It is rather comical how I tell myself before departing for the show that I do not need yet another rock, and once I am at the show I am like a kid in a candy store with a bit of money burning a hole in his pocket! Well I have a goal this year to try and get out there to the desert at least once and find those one of a kind finds.

Just around the corner is our show (March 25 & 26). This is a great event that all of our members put their heart and soul into to create a great show. This is our 55th show! That is an awesome achievement, especially for the size of our show and the vendors in hot pursuit of US to get into our show. So, sign up to volunteer and join in the fun!

Another plug I would like to put out there is for Gordon, our Field Trip Chairman. He has been, going out on little day trips to various places around our locality. These trips may not turn up a single rock to be carried out, but in my mind's eye this is rock hounding at its best. Of course Gordon has done a little bit of research, but one never knows if it will bear any fruit. I personally plan to get out there and join him on some of these outings and see just what we may find.

Finally, **don't forget the silent auction for the lapidary equipment that was donated by fellow members to be held at the January education meeting.** There are a number of nice pieces of equipment and I am hoping the opening bids are not going to scare anyone off. Just a reminder that all the funds raised from the silent auction will be used for the 18" saw for the Lapidary Shop. So, see you all in January at the education meeting.

In closing I would like to remind people to join in on our yearly show to experience the fun. Who knows, you may even add to your collection of things you have to have. We all look forward to the coming year and experiencing new and exciting adventures in the Roseville Rock Rollers!

— Glenn Fiala

Educational Program for January 10, 2017



“The Origins and Chemistry of Gold”

Presented by
Jim Hutchings

Vice President's Viewpoint

ALL THAT GLITTERS...

Our own Jim Hutchings will be giving the educational portion of our meeting on January 10th. The Man-with-the-Mine will be enlightening us on “The Origins & Chemistry of Gold”. Wonder if he'll pass out free samples???

When I gave my presentation in November on “Lapidary and Carving on a Budget” I promised everyone a price list of the tools that I have been using. I have posted a picture of the list on the RRR website:

www.rockrollers.com/HarborFreightLapidary.pdf

Wishing for all of you a healthy, happy, prosperous, and rock-alicious New Year!

—Bob Wilson

Inside this issue:

Meeting Minutes, Announcements	2
Rookie News, Announcements, Gem Faire Workers Needed, Show Volunteers Needed	3
It's 2017 Show Time!	4
SHOW BIZ — Exhibits, Publicity, Raffle Donations, Workers' Raffle	5
Lapidary Classes, 2016 Rockhound of the Year	6
Calendar, Quartzsite/Tucson News, Prize Tree Donations Needed, Site Ratings	7
Upcoming Shows, CFMS Field Trips, Rock & Gem	8

**MINUTES FOR ROSEVILLE ROCK ROLLERS
EDUCATIONAL MEETING DECEMBER 13, 2016**

Call to Order at 6:45 p.m. by President Teresa Johnson.

Flag Salute – led by Mike Hunerlach.

Present: 51+ members, 0 Rookies and 9 Guests.

Invocation – given by Mike Hunerlach.

Recess for Dinner.

Business Meeting called to Order.

Juniors' Activities – Carole Kowalik reported there were 6 Juniors and they decorated wooden ornaments or boxes.

Vice President, Bob Wilson – the programs for next year are being lined up.

Field Trips – Gordon Standlee will be having some exploration field trips in the future.

Librarian/Historian – please return books and magazines to Karla Shannon

Show – Jim Hutchings reported the next committee meeting will be Jan. 17th. Denise Coyne stated they are collecting items for the Raffle and items are needed for the silent auction. Carole Kowalik will be collecting tumbled stones for the grab bags.

Lapidary Shop – Chair Mike Hunerlach reported a cleanup of the shop was done and he thanked those who participated.

Refreshments – signups are being taken for the meetings starting in January.

Announcements –

Gem Faire will be Feb. 3, 4, and 5. Volunteers will be needed to pass out our show flyers. Details after the holidays.

Silent Auction of equipment – will be held to raise funds for the new 18” saw. The auction will be held during the Jan. 10th Ed. Mtg. On display were photos and starting bids for the equipment.

Presentation of CFMS bars and triangles – Teresa thanked the Board Officers for their work during 2016. The bar or triangle was given to each officer.

Election of Officers for 2017 – the candidates were introduced and a motion was MSA to accept the slate of officers for 2017.

Installation of Officers for 2017 was done by Teresa.

Rockhound of the Year Award – Mike Hunerlach introduced past recipients for this award and Cathy Hutchings made the presentation to this year’s recipient, Carole Kowalik.

Gift exchange was done.

Adjournment – meeting was adjourned at 7:55 p.m.

**MINUTES FOR ROSEVILLE ROCK ROLLERS
BOARD MEETING DECEMBER 13, 2016**

Call to Order - by President Teresa Johnson at 8:05 p.m.

Present – 10 Officers.

Membership Applications – a motion was made to accept the membership applications from Martha Gray-Heffner and Chris Maples and Juniors Chloe and Cooper Maples.

Thank you letters – received from Sierra College Foundation and Sierra College Natural History Museum for our donation of \$693.00 for the giant ground sloth skull.

Adjournment – meeting was adjourned at 8:10 p.m.

Respectfully submitted,
Florence Brady, RRR Secretary

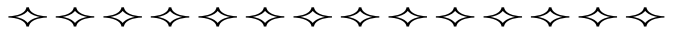


January Show Meeting

The meeting will be held Tuesday, January 17 at 7:00 PM in the club Lapidary Shop at the Fairgrounds. Members are encouraged to attend and get involved!

January Board Meeting

The meeting will be held Tuesday, January 24 at 7:00 PM in the club Lapidary Shop at the Fairgrounds.



Thank You for Shop Cleanup

The following RRR Members did a thorough cleanup of the Lapidary Shop in December:

Wes Arendtsen, Connie Arendtsen, Tom Rooney, and Lisa Pujals

Thanks for all your hard work!

— Mike Hunerlach



January Refreshments



Refreshments for the January 10 Educational meeting are to be provided by Nancy Hood, Martha Nichols, Peggy McPherson, Sharon Comas and Orlyn Torfason

We would appreciate if each family would sign up and bring a refreshment once in 2017.

The refreshment sign-up sheet will now be at the entrance, on the Greeter’s table.

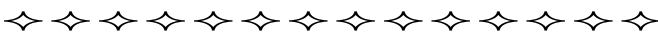
Gem Faire Workers Needed



The annual Gem Faire at the Roseville Fairgrounds will be on February 3, 4 & 5; Friday, Noon to 6 p.m., Saturday, 10 - 6 and Sunday, 10 - 5.

We are given a table space to display show flyers and information regarding our club. You get to tell the Faire attendees, at our show, they can get rocks, minerals and jewelry (and oh, yes, beads!) here at the Fairgrounds on March 25 & 26!

RRR volunteers are needed. We have shifts for 2 1/2 - 3 hrs. long, each of the 3 days. Signups will be taken during the January Educational Meeting or contact Jim Barton at (916) 847-7321 for more information and to sign up for a shift.



VOLUNTEERS NEEDED !!

The start of the new year, starts our "kickoff" for RRR members to volunteer to help our club with two upcoming events.

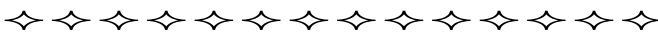
The first is the Gem Faire, held on the first weekend in February, (3, 4 & 5). This event gives RRR the opportunity to "spread the word" about our upcoming show, March 25th & 26th. Please refer to the article "Gem Faire Workers" for all the details.

The second is our annual show. This huge event, uses all the buildings in the Fairgrounds. Days volunteers are needed start with Thursday afternoon through Sunday evening. Last year, we used 137 volunteers - RRR members, relatives, friends and students! (We could use more this year.)

Check your calendar and determine when you can help, you are not limited to one shift, you can work several shifts, on several days. Please look at the Show Volunteers write up on page 4.

Signups will start at the January 10th Educational Meeting or contact Florence Brady, to reserve your favorite shift and place to work.

Florence Brady, Volunteer Coordinator, 2017 Show
fhbrady@jps.net



Sunshine

Congratulations to David & Renee Milldrum on the birth of a baby boy, Abel Leon Milldrum, on November 14!

Sunshine Chair, Cyndy Burchard, 530-346-9481,
or cyned0523@yahoo.com.

Welcome New Members:

Martha Gray-Heffner
Chris Maples

Welcome New Junior Members:

Chloe Maples
Cooper Maples



To Current Unrenewed Members:

This will be your last issue of the bulletin if you do not renew your membership!

If you are renewing, please add the \$3 late fee to your check.

— The Editor

Rookie Rock Roller News



The Rookies will meet in the lapidary shop at 5:30 on January 10, 2017.

At our last meeting, the Rookies decorated wood boxes and/or wood ornaments with rocks and glitter. After our activity, we joined the adults at the potluck. We ate our fill, had a gift exchange and installed the new officers of the club.

At our meeting in January, we will have a presentation on fossils and plan the juniors' presentations for the adults in February. You may bring your posters or PowerPoints to leave with me to hold if you would like. We will have an activity following the presentation. Be sure to make an appointment with me to go over the badges. You might be surprised to see you have already qualified for some of them.

See you all there,

Carole Kowalik, Junior Advisor
916-705-2124 home3004@gmail.com



Setup/Takedown



Admission



Kids' Junction



Kitchen

**It's 2017 Show Time – We Need Helpers! DATES: March 24, 25, 26
(NO experience needed!)**

Our show for 2017 needs volunteer workers to help with a short time setup Thursday afternoon, March 23, our regular setup on Friday, March 24, members to help during the show hours on Saturday and Sunday, and also with the takedown procedure on Sunday. For our new members, don't hesitate to help, as you will be working with other club members who can provide any needed assistance to you. Remember, once it was all new to us, too!

See areas where help is needed below. We ask that you sign up for a complete shift. Each volunteer will receive a ticket for the "Workers' Raffle" for each shift worked. (Volunteers working for Setup and Takedown shifts receive double raffle tickets.) Sign in with the Chairperson for the area where you are working.

Signups will be taken at our Educational Meetings. Look for the **SHOW SIGNUPS** sign. OR contact Florence at (916) 961-6868, fhbrady@jps.net.

SETUP – starts at 9 a.m. on Friday, March 24 and continues through the morning/afternoon. (A lunch is provided.) Assist with unloading items from storage trailer. Skirting is placed on vendors' tables and exhibit tables, exhibit cases are set up, and signs placed. During the afternoon, we help the exhibitors, vendors, and assist in kitchen if needed. A dinner is available for workers.

TAKEDOWN – starts promptly at 4 p.m. on Sunday, March 26. Assist exhibitors. Remove empty exhibit cases, remove skirting, take down exhibitor tables. Remove skirting from vendors' tables. Help pack all items into storage trailer. Help Silent Auction, Kids' Junction/Education Station, Kitchen, and Entrance Area clean up. Clean up buildings. Fairgrounds puts away tables and chairs.

DURING THE SHOW – Hours Open: Sat. 10-5, Sun. 10-4

Each Show Day, two different shifts: 9:30 -1:30 and 1:00-5:00

(Kitchen and Kids' Junction/Education Station have different times/shifts.)**

***KITCHEN** - help prepare the food or be a cashier and take orders and money. Shifts are: 9:00 - 1:00, 10:30 – 2:30 and 1:00 - 5:00

SILENT AUCTION - Explain different auctions. Help setup an auction. Collect money from winners and make direct sales. A lot of fun, you get to see what is offered for sale!

***KIDS' JUNCTION/EDUCATION STATION**
Run the train, assist with selling items, the spinning wheel, making necklaces, selling grab bags, etc. Shifts are: 9:30-1:30, 11:00 – 3:00 and 1:00 -5:00

RAFFLE TABLE — Sell Raffle Tickets! Explain grand prizes and hourly prizes. Assist Chairpersons.

ADMISSION TABLES — greet visitors, take admission money, assist with filling out forms for hourly drawings and for addresses for the postcards. Explain the show is in 4 buildings.

DRIVEWAY/GREETER — Stand in front of Garden Room door and direct visitors inside; make sure no one goes into the other part of the Show without going through the Garden Room first, to pay.

SECURITY — Walk around the assigned building, be observant of the guests. Cell phones will be used to keep in contact. Vests stating "Security" are worn.

EXTRA PERSONS — TO BE ASSIGNED WHERE NEEDED These members would fill in where needed during the shift they signed up for.

☆☆☆ SHOW BIZ ☆☆☆



Exhibit Case Applications

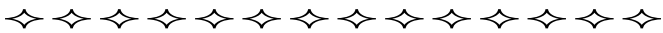
Would you like to exhibit your work/collection in our March 2017 Gem and Mineral show?

It's probably a lot easier than you think. The club supplies the exhibit case all set up and ready for you to place your exhibit.. All you need to do is display your minerals, fossils, jewelry or anything made from rocks or precious metals.

Sound like fun? Want to learn more? Send me an email or give me a call and I will answer your questions, and send you the information letter, exhibit form, and some helpful hints to help you get started.

Thanks, and see you at the show.

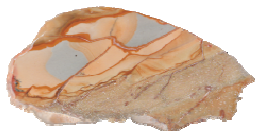
*John McPherson, RRR 2017 Show Exhibits Chair
jmcpher281@aol.com
Home phone 916-331-2533 or cell number 916-804-4272 I receive texts.*



Raffle Donations

Chris and Denise are requesting donations for the Show Raffle and Door Prizes. We are looking for your rock art and jewelry. Also, we are looking for slabs. Please ID your items, and add your name if you wish.

There will be a donation box on the Show & Tell table at the meetings and a box in the classroom at the shop. Any more questions contact Denise at dedoodads@gmail.com or Chris at evergreen.369@juno.com



Publicity Volunteers Needed!

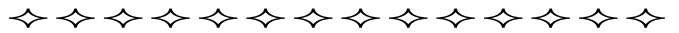


The Publicity group of the Annual Show is looking for at least one or two volunteers, who can promote the RRR show on various social media



websites.

This is a short-term position (through March) posting/ updating information about our annual Gem and Mineral Show on the web. Volunteers need to be proficient in Facebook, Twitter, etc. If you are interested, please contact Gloria Marie at gloriarosevillerockrollers@gmail.com.

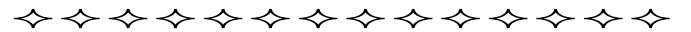


HEAR YE TUMBLER-ERS



We need your extra tumbled rocks. They do not need to be perfect. Any donations will be well used. We also accept beads, fossils, jewelry findings, etc. There should be jars labelled "Rookies" at the lapidary shop or educational meeting. Or hand them in to any show chair or junior advisor. We plan to use them to fill grab bags, use on the spinning wheel and for other activities in our Kids' Junction for our Show in March.

*Carole Kowalik, Juniors' Advisor
(Tumbling grit is available from RRR)*



Workers' Raffle

Prizes this year are:

First Prize: Amethyst Tower
Second, Third and Fourth Prizes: Your choice of an RRR vest with patch, **OR** a family membership to RRR for one year.



You earn a ticket for each 4-hour shift you work at the show! It's that simple. You earn two tickets for working during the Set-up or Takedown shifts.

And when those raffle tickets are pulled (at the April 11th meeting — need not be present to win), you are only competing with other show workers. So your chances of winning are much better than being struck by lightning!

Lapidary Classes

Lapidary Classes - Introduction to Shop Use & Cabochon making is \$10 per class for 5 classes or \$45 paid in full. Our Rock Hound Oasis is staffed Monday & Wednesday nights 5 pm - 9 pm! Learn more about the Lapidary Arts & Cabochon Making. A DVD is available for viewing at the Shop for Cabochon Making.

Regular \$5 per day or \$20 monthly rates apply for lapidary shop use after Orientation/Introduction classes.

Large & Extra Large Saws: \$1 per slab for 18 inch saw & \$2 per slab for 24 inch saw for cutting large & extra large rocks.

Crafty Days - Crafty Days is a get together for anybody wanting to work on their craft while yakking and snacking! We always have fun! Bring whatever you are working on and a snack to share. We meet 1st and 3rd Mondays each month, 10-2pm at the Lapidary Shop. **Crafty Days are beginning again in January!**

Crafty Days are open play days. No class or class fee, \$5 for use of Shop is the only fee.

Wire Classes are available on request: Wire Wrap, Cab Wrap, Viking Knit, Chain Maille, Woven Wire Bracelet, Copper Tube Bracelet.



**Text or call... Judy Osmundson
205-541-7207**

Mineral ID with Jim Hutchings

TBA Sign-up for next offering.

Learn the necessary tools, books & techniques of identifying rocks & minerals! Fee: \$25

Stereo-Microscope Workshop

TBA Sign up for next offering. Hands-on workshop on identifying gems and minerals, detecting flaws in lapidary material, and enjoying the beauty of smaller specimens. Scopes provided or bring your own. Fee: \$5

Remember - We ask that you sign up ahead of time for classes. For our classes listed as by appointment or TBA, we build the class based on sign-ups & instructors schedules. In other words, we make the date when we have sign-ups.

Shop Clean-up is something everyone does!

Use the full surface of the belts - to prevent premature wearing. A DVD is available for viewing at the Shop for Cabochon Making.



2016 Rockhound of the Year



The Roseville Rock Rollers Gem & Mineral Society nominates Carole Kowalik, our Juniors' Advisor, for the 2016 Rockhound of the Year. Carole joined RRR in 2010 and has been an extremely active member. Carole Kowalik's dedication to the youth program has made a significant and positive impact to the Roseville Rock Rollers. As leader of the Rookie Rock Rollers, she spends countless hours preparing exciting activities, working with kids on their FRA badges, supporting club tailgaters, and co-chairing Kids' Junction during our show.

Carole faithfully attends all board and show committee meetings. She has represented our club at the Gem Faire and worked at the recent CFMS show. Last year, she updated the addresses for show mailings and spent hundreds of hours retyping them into another program to avoid duplication.

Always, she greets each member with her warm, welcoming smile. For these and many other reasons, we are proud to recommend Carole Kowalik for 2016 Rockhound of the Year.

Submitted by Teresa Johnson, President 2016, Roseville Rock Rollers Gem & Mineral Society

Quartzsite/Tucson News

With the new year comes the renewed schedule of shows and events we all love to attend. There is the precursor to the Tucson Gem and Mineral show, and that is Quartzsite. For those of you who have not made the trek to the California/Arizona border to visit the little town, I truly recommend that you visit it at least once. A number of the vendors that show up in Tucson pre-stage themselves in Quartzsite.

Then in Tucson, the huge Tucson Gem and Mineral Show happens for quite some time. This one is just unbelievable and I am in awe each time I go and find myself always gaping at the awesome specimens that are up for sale.

My greatest recommendation for Tucson is to go with a list of items you must buy and a limit to your spending. If you follow these simple rules you will have a blast and just love all the sights to be taken in. Unfortunately Tucson cannot be seen in a single day; plan to spend several days to really enjoy this show.

— Glenn Fiala

Donations Needed

The Prize Tree (door prizes at the Educational meetings) is getting pretty bare. Donations are needed, and will be much appreciated!

— Nancy Hood



For Future Field Trips Reference

COLLECTION OR VIEWING SITE RATINGS

- 1 & 2:** Flat ground or paved handicap access to and at site
- 3 & 4:** Flat ground, unpaved sections, handicap access
- 5:** ¼ to ½ mile trail to site with moderate difficulty
- 6:** ¼ to ½ mile with trails on hillsides, through brush and creek beds
- 7:** ½ mile or more to site, difficult trails and ravines or water crossing. Potential exploration for additional sites.
- 8:** Difficult trails, difficult access to site, or difficult collecting conditions at the site and/or Unknown



January Calendar

Birthstone: Garnet



Sun	Mon	Tues	Weds	Thurs	Fri	Sat
1	2 Crafty Day 10 am-2 pm Lapidary Shop 5:00-9:00 pm	3	4 Lapidary Shop 5:00-9:00 pm	5	6	7
8	9 Lapidary Shop 5:00-9:00 pm	10 Meetings: Rookies 5:30 pm Club 7:00 pm	11 Lapidary Shop 5:00-9:00 pm	12	13	14
15	16 Crafty Day 10 am-2 pm Lapidary Shop 5:00-9:00 pm 	17 SHOW Meeting 7:00 pm	18 Lapidary Shop 5:00-9:00 pm	19	20	21
22	23 Lapidary Shop 5:00-9:00 pm	24 Board Meeting 7:00 pm	25 Lapidary Shop 5:00-9:00 pm	26	27	28
29	30 Lapidary Shop 5:00-9:00 pm	31	For more class information, text or call Class Coordinator: Judy Osmundson 205-541-7207			

Co-Op and Other Field Trips

General Rules:

- These trips are open to all rockhounds who agree to abide by the AFMS Code of Ethics, the directions of the field trip leader and practice safe rockhounding.
- Call the field trip leader beforehand to sign up and for further information.
- Remember to wear your name badge and **sign in and out** with the field trip leader.
- Consent and Assumption of Risk Waiver of Liability form must be signed upon arrival at meeting site.

Jan 21	Lavic Siding, for agates and jaspers. CFMS Field Trips South. Contact: Adam Dean: thegatehunter@verizon.net (909) 489-4899
--------	--



Seeking Lapidary & Jewelry-Making Articles for Rock & Gem Magazine

By **Jim Brace-Thompson**,
Rock & Gem Contributing Author



Lynn Varon, Managing Editor of *Rock & Gem*, needs your assistance! *Rock & Gem* is the officially endorsed hobby magazine of the American Federation of Mineralogical Societies. That means it's our magazine! In order to better serve their lapidary readers, *Rock & Gem* intends to increase the number of articles devoted to the lapidary arts and jewelry making.

Members of AFMS clubs may wish to share their expertise in cabochon cutting and polishing, gemstone carving, soapstone carving, rock sculpture in general, beading of all kinds, intarsia, inlay and mosaics, sphere making, bead making and drilling, flat-lapping, scrimshaw, wirewrapping, chainmaille, fused glass, polymer clay and PMC, silver- and goldsmithing, lost wax casting, faceting, and other techniques that are of interest to today's lapidary hobbyist. Lynn would value article submissions and/or recommendations of experts whom she could approach to contribute articles.

To read *Rock & Gem's* writers' guidelines, visit www.rockngem.com/wpcontent/uploads/2010/10/2017-RG-guidelines.pdf

For further info about contributing, contact Lynn directly at editor@rockngem.com.

From *CFMS Newsletter 1/17*

Upcoming Northern California Shows

January 21 - 22: EXETER, CA

Tule Gem & Mineral Society, Visalia
Exeter Veterans' Memorial Bldg, 324 N. Kaweah Ave.
Hours: Sat 10 - 5; Sun 10 - 4
Contact: Laura Manser (559) 303-0632
Email: ldriggs5@gmail.com
Website: www.tulegem.com

February 18 - 19: ANTIOCH, CA

Antioch Gem Club
Contra Costa County Fairgrounds, 1201 West 10th St.
Hours: 10 - 5 daily
Contact: Brenda Miguel, (925) 301-6957
Email: brenda.miguel@yahoo.com
Website: www.antiochlapidaryclub.com

February 25 - 26: VALLEJO, CA

Vallejo Gem & Mineral Society
Solano County Fairgrounds, McCormack Hall
900 Fairgrounds Drive
Hours: 10 - 5 daily
Contact: Dan Wolke, 707 334-2950
Email: dncwolke@sbcglobal.net
Website: www.vjgems.org

March 3 - 5: NEWARK, CA

Mineral & Gem Society of Castro Valley
Newark Pavilion, 6430 Thornton Avenue
Hours: Fri & Sat 10 - 6; Sun 10 - 5
Contact: Cathy Miller, (510) 305-4196
Email: showchair@mgscv.org
Website: www.mgscv.org

March 11 - 12: TURLOCK, CA

Mother Lode Mineral Society, Modesto
Stanislaus County Fairgrounds, 900 North Broadway
Hours: 10 - 5 daily
Contacts: Bud & Terry McMillin, (209) 524-3494
Email: bbud.mcmillin.b7yj@statefarm.com
Website: www.motherlodemineralsociety.com

March 25 - 26: ANGELS CAMP, CA

Calaveras Gem & Mineral Society
Calaveras County Fairgrounds, 101 Frogtown Road
Hours: Sat 10 - 5; Sun 10 - 4
Contact: Dave Muster (209-518-8795) or Anna Christiansen (209-847-1173)
Email: annachristiansen7132@comcast.net
Website: www.calaverasgemandmineral.org

March 25- 26: ROSEVILLE, CA

Roseville Rock Rollers Gem & Mineral Society
Placer County Fairgrounds
800 All American City Blvd
(off Washington)
Hours: Sat 10 - 5; Sun 10 - 4
Contact: Gloria Marie, (916) 216-1114
Email: gloriarosevillerockrollers@gmail.com
Website: www.rockrollers.com



ROSEVILLE ROCK ROLLERS GEM & MINERAL SOCIETY
BULLETIN EDITOR
P.O. BOX 212
ROSEVILLE, CA 95678

Send exchange bulletins to
above address



January 2017

*** First Class Mail ***



the
**ROLLIN'
ROCK**

ROSEVILLE ROCK ROLLERS, INC.



MEMBER, CALIFORNIA FEDERATION
OF MINERALOGICAL SOCIETIES
MEMBER, AMERICAN FEDERATION OF MINERALOGICAL SOCIETIES
VOL. 58 NO. 1 JANUARY 2017

EDUCATIONAL MEETING 2ND TUESDAY OF EACH MONTH, 7:00 PM
EXECUTIVE BOARD MEETING 4TH TUESDAY OF EACH MONTH, 7:00 PM

EDUCATIONAL MEETING LOCATION: ROSEVILLE FAIRGROUNDS,
GARDEN ROOM, 800 ALL AMERICA CITY BLVD., ROSEVILLE, CA

BOARD MEETING LOCATION: ROSEVILLE FAIRGROUNDS,
LAPIDARY SHOP TRAILER BEYOND GATE "C" PARKING LOT

Changes and exceptions will be published in the bulletin.

GUESTS AND VISITORS ALWAYS WELCOME