



## From the President's Pen

We're off to a great start with the January Education Meeting. What a great presentation! When you get this, I will be in Tucson, Arizona for the great Tucson Gem and Mineral Show. As some of you know, what is now called the Tucson Gem and Mineral Show starts with two weeks of trade association and wholesale gem, mineral, jewelry, fossil, and bead shows. It all ends on the second weekend of February with the Tucson Gem and Mineral Society Show.

In about 60 years, the sleepy little Tucson G & M Society show has grown into the largest event in the gem and mineral world, world wide! Literally, it is the true modern "Silk Road." Nearly everything and anything, from anywhere, ends up in Tucson over the two weeks. The transactions known as "by appointment only" can never be estimated in the dollar amount that changes hands. The tax on lodging, gas, and food alone represents about \$2.7 million dollars to Tucson's economy. Over 5,000 vendors at 400 event sites show up for the two weeks to sell--sell--sell! It is an overwhelming experience and you must look to those who have been there to even know where to start. You will never see it all. Of course, if you just go on that last weekend, you will attend the finest Gem and Mineral show in the world.

The case exhibits are by invitation only, juried, and the best of the best. The Smithsonian Institution is well represented, the exhibits are so rare and expensive, (National Treasures) that they require a police officer next to them, to guard them at all times. That is the caliber of exhibits. This year's theme is the Minerals of Arizona. I am sure we will see the finest of specimens from the old copper mines at Bisbee and Morenci. See you at the February meeting!

-- Jim Hutchings

## Vice President's Viewpoint

Our February presentation will take us to new heights! ROCKS FROM SPACE: Meteoroids, Meteors, and Meteorites, by J. Timothy Unruh. Unique scientific lecture discusses history, theory, and practice of meteorites. Discover and learn about these fascinating objects from worlds beyond in the magnificent starry cosmos, as our narrator takes rockhounding to new heights!

Hear answers to your questions about the mysteries of these fascinating relics from the heavens. A table will be set up with specimens on exhibit, and specimens and books will also be made available for purchase.

— Teresa Johnson

## Tumbled Rocks Needed for Grab Bags

We'll need your tumbled rocks (or other items) for the work parties to put in grab bags, so bring them to the meeting. **Please give them to Karla Shannon (Librarian/Historian).**

## Educational Program for February 14, 2012



One of our favorite speakers,  
**Tim Unruh**, returns, to talk about  
**METEORITES**

### THINGS TO DO AT THIS MEETING!

- SIGN UP TO WORK AT THE SHOW!
- BUY RAFFLE TICKETS
- BRING YOUR DONATIONS FOR: THE RAFFLE & THE AUCTION
- BRING YOUR TUMBLED ROCKS
- PICK UP SHOW FLYERS

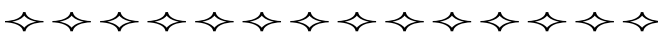
## Inside this issue:

Meeting Minutes	2
New Members, Rookie News, Sunshine, Announcements	3
Lapidary Classes, In Memoriam: Nola Haggerty, Shop News	4
Volunteer Workers Needed, Exhibit Case Applications, RRR Exhibitors' Case	5
2 Work Parties, Raffle Tickets, Thank You	6
Show Postcards, Silent Auctions, Are You Afraid to Open Your Closet?	7
Yerington, NV Field Trip, CFMS Endowment Fundraising Drive	8
Calendar, Show Ads	9
Upcoming Shows, CO-OP Field Trips	10

**MINUTES FOR ROSEVILLE ROCK ROLLERS  
EDUCATIONAL MEETING JANUARY 10, 2012**

**Call to Order** at 7:05 p.m. by President Jim Hutchings.  
**Flag Salute.**  
**Present:** 61 members, 3 juniors and 5 guests.  
**Introductions** – of guests and visitors.  
**Sunshine** – Jim Barton reported that his mother, RRR member Bernadine Barton, is in a care facility.  
**Rookies** – Carole Kowalik reported that the junior group watched a movie about crystals in Arkansas, and then grew some of their own crystals from Epsom salts and alum.  
**Vice President/Programs** – Teresa Johnson asked for a vote about whether members would like our next presenter, Tim Unruh, to talk about meteorites, or tektites. By a show of hands, meteorites won.  
**Federation Director** – Rolf Zschoernig had no report.  
**Field Trips** – Gordon Standlee was absent, but Jim Barton talked about the upcoming CFMS Topaz Mt. trip, and the RRR Malakoff Diggings trip.  
**Librarian/Historian** – Karla Shannon reported the library has the newest Rock & Gem issue.  
**Refreshments** – Karla is taking signups for February & March.  
**Show** – Dan Stafford is selling raffle tickets, and accepting donations for prizes. Jim Hutchings reported that there is a new Fairgrounds Manager, whom he has met and talked to about our club's activities. (The Manager did not understand what a "rock roller" was). The next show meeting is Tuesday, Jan. 17 at 6:30 pm in the Lapidary Shop.  
**Classes Coordinator** – Teresa Johnson reminded everyone of the scheduled Introduction to Flat Lap, Flint Knapping, and Chain Maille classes. A class in basic Mineral Identification will be scheduled sometime in the months after the show.  
**Drawings** – winners were: member, Kim Loe; Junior, Richard Johnson and Guest, Tom Dassaganini.  
**Program:** Sonja Patel gave a slide show and talk about "Amber, An Organic Gemstone & Fossil."  
**Recess for Refreshments.**  
**Gem Faire** – Jim Barton asked for more volunteers to work at the RRR booth at the Gem Faire in February.  
**Adjournment** – meeting was adjourned at 8:35 p.m.

Respectfully submitted,  
Terry Yoschak, Acting Secretary



You never really learn to swear until you learn to drive.  
-----  
If at first you don't succeed, skydiving is not for you!  
-----  
A bargain: something you cannot use at a price you cannot resist.

from [http://www.bitoffun.com/oneliners\\_funny.htm](http://www.bitoffun.com/oneliners_funny.htm)

**MINUTES FOR ROSEVILLE ROCK ROLLERS  
BOARD MEETING JANUARY 24, 2012**

**Call to Order** by Vice President Teresa Johnson at 7:06 p.m.  
**Introductions** by officers and guests.  
**Present** – there was a quorum, present: Florence Brady, Teresa Johnson, Gary Logue, Gordon Standlee, Karla Shannon, Terry Yoschak and Rolf Zschoernig. Absent were 5 officers. 4 Guests were present.  
**Minutes** – a motion was MSA to approve as published Minutes for Nov. 22, 2011 Bd. Mtg., Dec. 13, 2011 Ed. Mtg., Dec. 27, 2011 Bd. Mtg. and Ed. Mtg. Jan. 10, 2012.  
**Treasurer** – Terry Yoschak shared a report for the expenses and income for the Club, for 2011 (only, not Show). Discussion occurred. Last year, we did not have a scholarship recipient due to lack of qualified applicants.  
**Correspondence** – none  
**Membership Applications** – a motion was MSA to approve the membership applications from Jacquie Chamberlin, Jerry & Dena EagleBear, James Foreman and Misty Steuben. Membership is now 197.  
**Vice President/Programs** – Teresa reported the program for February's Ed. Mtg. will be a presentation on meteorites by J. Tim Unruh. March will be a program by the Rookies along with show information and April will be an oral auction and May will be a presentation by Dick Hilton.  
**Librarian/Historian** – Karla Shannon had no report. She was apprised that there are donated books in the library.  
**Bulletin Editor** – Terry reported the deadline will be Friday, February 3<sup>rd</sup>.  
**Field Trips** – Gordon Standlee gave an update on the Malakoff Diggings SHP field trip in June. This will be a CFMS North, CO-OP, RRR and Gold Hounds sponsored field trip. Gordon mentioned other trips he is working on, that will be local in nature. (Gold Run, Secret Ravine, Auburn and possibly a geology tour of a hand dug trench in the American River/Folsom Lake area.)  
**CFMS** – Rolf Zschoernig reported on an upcoming exhibit case judges training seminar to be held in Reno, in May, applications are available. CFMS offers two Earth Science Seminars each year. We will do the collection of nickels at our Ed. Mtgs. for the CFMS Endowment Fund.  
**Lapidary Classes** – Teresa reported on the flint knapping class (photos are on the website) and the recent Saturdays when the Lap Shop was open with an instructor, Erik Anspaugh instructing. There is interest in having another rock tumbling class. The faceting class (7-8 students present), given by Wally Hobson was excellent.  
**Show** – Jim Hutchings was absent. A summary of the show and its activities was given. Florence is continuing to sign up workers.

(Continued on page 3)

**Lapidary Shop** – Teresa asked if the combination on the lock should be changed quarterly. Discussed was the \$5 per day use by a member and if a shop steward should be present. Teresa would like to see the shop staffed by a qualified instructor on the Saturdays when no class is present. She needs help to keep it open on Saturdays. Gary Logue was thanked for his work in replacing the rotten plywood on the ramp by the entrance to the Library door. He said other repairs could be made, but he needs help.

**Directors** – Gary Logue was the only Director present, he had no report other than the repairs he made.

**Old Business** – none

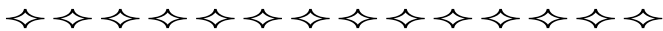
**New Business** – Teresa reported she was contacted by a person interested in starting a new Faceters Guild. We might be able to rent the shop to them for a monthly meeting.

**Next Board Meeting** – February 28, 2012.

**Future Agenda Items** – combination lock for shop (changing combination); \$5 per day to use shop, should a steward be present and July Ed. Mtg. (should we continue with the potluck?).

**Adjournment** – meeting was adjourned at 8:21 p.m.

Respectfully submitted,  
Florence Brady, RRR Secretary

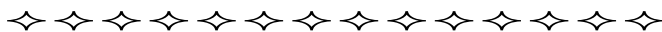


## February Show Meeting

The next Show meeting will be at 6:30 PM, Tuesday, February 21, in our club Lapidary Workshop at the Fairgrounds. All members are welcome to attend.

## February Board Meeting

The meeting will be held Tuesday, February 28, at 7:00 PM in the club Lapidary Shop at the Roseville Fairgrounds.



## Sunshine

A card of encouragement was sent to Bernadine Barton, because she had moved into a care facility. A sympathy card was sent to David Haggerty and family, due to the passing of Nola. (See obituary on Page 4).

When you know of any member who is ill or has been hospitalized, please contact our Sunshine Chair, Cyndy Burchard, at 530-346-9481, or cycled0523@yahoo.com.



## Welcome New Members

Jacquie Chamberlin  
Jerry & Dena EagleBear  
Jim Forman  
Misty Steuben

If you have any special interests you would like to pursue, we have some very talented and knowledgeable members in our club.

## Rookie Rock Roller News

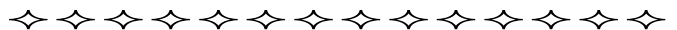


The Rookies will meet in the lapidary shop on February 14, 2012 at 5:30 pm. Last month we had a study of the different kinds of crystals. The Rookies had to pick from a pile of rocks to decipher which were crystals and which were not. They each were given a sample to place in their collection box. Jim Hutchings was on hand to clear up some questions and tell us more about crystals. He brought great examples to show. We made crystal samples with sugar, salt, Epsom salts, and alum.

We look forward to checking out the crystal samples at this February meeting. We will be presented Emeralds by Brenna Snow. Be sure to let me know if you have done something toward earning badges. I am always ready to meet with rookies and parents to see if any badges were earned. Call or email me to set up a time.

See you all there,

*Carole Kowalik, Junior Advisor*  
916-705-2124      [home3004@gmail.com](mailto:home3004@gmail.com)



## February Refreshments



Refreshments for the February 14th Educational meeting are to be provided by Ceil Wiegand, Denise Hansen, Mark Snow, Nettie Moore, Gary Logue and Nancy Hood. Thank you all in advance!

**We would appreciate if each family would sign up and bring a refreshment once in 2012.**

## Lapidary Classes

**This Saturday, Feb 4th, the Lapidary Shop will be open for use at 9:00 am!**

Come and join us at the Roseville Rock Rollers Lapidary Shop. You've joined the club; so come on down for a member's tour.

- Polish a cabochon, browse our rock library or just talk rocks with other rock hounds. We will be open for everything rocks.
- Want to take a class, offer a class or just do some sharing, the club house will be open 9:00 am - 3:00 pm.

The Lapidary shop will be offering Cabochon (lapidary) classes. The shop is open for use when a lapidary class is offered. You do not have to be there at 9 am - just let us know when you can.

### Chain Maille Classes



The Classes for Rock Rollers will be having two Chain Maille classes:

**Date: Saturday, Feb 11th**

Location: Rock Roller Lapidary Shop

Cost: \$42 (includes material & shop fee)

#### **Beginning Chain Maille is: 10:00 am - Noon**

We will be learning 4 different types of chain maille. Incorporating the 4 styles into one bracelet. Or - We will be making 1 (one) bracelet with 4 different styles. Ending up with a sample of 4 types of chain maille!

#### **Advanced Chain Maille is: 1:00 pm - 2:00 pm**

Advanced can bring a picture of what they want to learn and the instructor will teach you how to deconstruct it to make your own. (Max. is 5 for either class)

#### **Simple Silver Wire Cabochon Setting**

**Wednesday, Feb 22nd, 6:00 pm** with Gayla Barger. Learn to solder silver wire into an interchangeable silver bail. Tools and equipment available to use during class. Bring your favorite Cab. Fee: \$15

**Sign up now -- Teresa Johnson, Class Coordinator**  
phone: 916-929-0701  
email: [classesforrockrollers@gmail.com](mailto:classesforrockrollers@gmail.com)

**Just be forewarned: We talk rocks!**

## In Memoriam

Nola Haggerty, an RRR member since 2008, died January 19th, of cancer, at age 68. Nola was born in Klamath Falls, OR, but grew up in Davis, CA. She graduated from Davis High School and went on to earn a bachelor's degree from the University of San Francisco as a registered nurse. She met her future husband David Haggerty in 1963, and they married in 1964. They had four children: Kelly, Bill, Tom & Katie.

Nola had a long career as a nurse at the UCD Student Health Center (1970-2001) and after retiring from there she worked part time in Sacramento as a medical consultant's assistant at the California Department of Forestry and Fire Protection (now CAL FIRE).

A requiem Mass was held for Nola at St. James Church in Davis on January 27. A luncheon reception and celebration of her life followed. In honor of Nola's love of bright colors, attendees were encouraged to wear a piece of red clothing or accessory.

At her wish, Nola's remains will be cremated and returned to the family. She is survived by husband David, her four children, and six grandchildren.



## Shop News

Thank you so much to Lona Owens. She broke out the old rototiller and weed whacker and brought the wild jungle of weeds under submission! The shop had a great "happening" with the special Saturday lapidary class put on by Erik Anspaugh, a primer on flint knapping by John Szabo, an offer to teach some casting by a soon-to-be new member, and general jaw-jacking to all hours by those in attendance. This is what we hoped the shop to be, a learning place! Thanks, Teresa, for pushing the cart forward on this.  
— *Jim Hutchings*

A very special thank you to Erik & Debra Anspaugh for getting us going on our first Saturday lapidary shop openings. Erik volunteered to teach a new member; I surprised him with four.

Our Faceting overview class with Wally Hobson was well attended. Wally's years of experience were evident, his stories enthralling, and his love for the hobby showed through. Thank you, Wally!

The Arrowhead-making class with John Szabo was a blast. John will be demonstrating at our show, and we'll have him back for another class, possibly in April.

— *Teresa Johnson*

# ☆☆☆ SHOW BIZ ☆☆☆

**Volunteer Workers Needed During Our Show! DATES: March 23, 24 and 25**



**Setup/Takedown**



**Admission**



**Kids' Junction**



**Kitchen**

▶▶ At the meeting, please sign up to help during our show. ◀◀  
The signup papers are on the table across the entrance from the greeter's table.

**Setup** - Friday, March 23 starting at 9 a.m. Usually finished by noon.

**Takedown** - Sunday, March 25, starting at 4 p.m. until finished (6-7 p.m.).

**The below areas have shifts starting at 9:30 - 1:30 and 1:00 - 5:00 on Saturday and Sunday.**

- Admissions
- Club Information Table
- Raffle (shift for Sun. 9:30 - 1:30 is full), other 3 shifts need helpers
- Security
- Silent Auction
- Work Where Needed

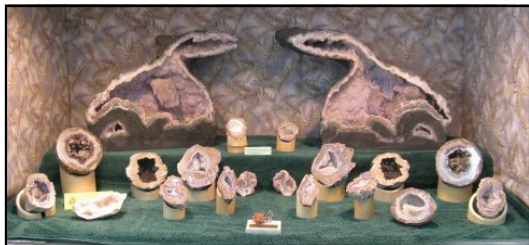
**The two below areas have 3 shifts for Saturday and Sunday: 9:00 - 1:00, 10:30 - 2:30 and 1:00 - 5:00.**

- Kids' Junction
- Kitchen

### **RRR NAME BADGES**



Members should be wearing their RRR name badge while working during the show. If you need to purchase a replacement (\$6.00) please contact Florence Brady, (916) 961-6868. T-shirts and vests will also be for sale at the meeting.



## **Exhibit Case Applications**

Exhibit cases are one of the main attractions of our show. It gives the public an idea of what our hobby is all about. Exhibit cases help do just that and it also gives us a way to show off our fabulous collections.

Exhibit case applications have been sent out to everyone that exhibited last year and others on our list. Please return your application as soon as possible by mail or bring it to one of our meetings. Or get an application from Exhibit Chairman Jon North at (916) 768-0137 or pick one up at the next meeting.



## **“RRR Exhibitors’ Case” Wants Your Best Stuff!**

For the last few years we have had an “Exhibitors’ Case” in the Exhibits section of our show. This has become a RRR tradition and has received rave reviews! It is a case where members can show off a couple of their handmade items that they created. If you want to participate in the “Exhibitors’ Case”, contact Exhibit Chairman Jon North at (916) 768-0137 for an application or pick one up at the next meeting.

**Kids' Junction Work Party**  
**Saturday, February 18, 9:00 AM**  
**at the Lapidary Shop**

We will be working **INSIDE** the shop

- Sorting beads for necklaces
- Assembling specimen boxes
  - Put boxes together
  - Cut cotton for inside
  - Cut and glue on specimen labels
  - Add the specimens
- Making Grab Bags
  - Cut fabric for bags
  - Iron down tops
  - Sew sides of bags and turn
  - Cut and add strings

Bring scissors, basic sewing supplies, and your lunch. **We also need donations of fabric scraps for the bags, and polished rocks to put in the bags.**

-- Karla Shannon

**Silent Auction Work Party**  
**Saturday, February 18, 9:00 AM**  
**at the Lapidary Shop**

*(rain date Saturday, February 25)*

We will be sorting and cleaning rocks, **OUTSIDE** the shop.

- We will be sorting through buckets and containers of rocks, slabs, etc; washing and packing it up.
- We will be working outside, so dress in layers, and wear clothes you don't mind getting dirty.
- Bring rubber boots and gloves if you have them; scrub brushes, mosquito repellent, lunch or a snack.
- Thanks in advance for your help!

► **On Friday morning, March 23rd, help hauling the buckets over to Johnson Hall and getting them on the stage is always needed, and much appreciated.**

*Nancy Hood, Silent Auction Chair*  
 916-316-6579



**Grand Prize Raffle Tickets**

**The Grand Prize Tickets will be available for pickup at the February & March Educational meetings.**

You can get tickets for yourself and to sell to friends, relatives, neighbors, etc Payment is due when the ticket stubs are returned. All checks should be made payable to RRR

**Cost:** 6 tickets for \$ 5.00 or singles for \$ 1.00 each. Return address labels may be placed on ticket stubs.

**Prize Donations Are Needed**



We really need donations for the Grand Prizes and for the Hourly Prizes. Please bring your donation (labeled with your name), to the educational meeting and give to Dan. Jewelry, mineral specimens, a gift certificate for your favorite place, dinner for two, tools for rock hounds; subscription to a rock magazine, etc. ---

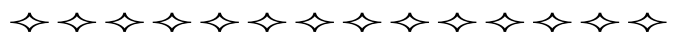
**Things you would like to WIN!**

**SPONSOR LETTERS ARE AVAILABLE -- TO GIVE TO BUSINESSES, ETC.**

**LET'S MAKE THIS THE BEST SHOW WE HAVE EVER HAD!!!**

If you have questions, please call me:  
 Dan 916-784-0161 Record message if no answer.  
 I will be glad to return your call.

— Dan Stafford, Raffle Chair



**Thank You**

Thank you to Cyndy Burchard for the 2 wire-wrapped cabs for our Prize Tree!

### Show Postcards

This year, we will be e-mailing informational postcards about our show, as well as US mailing them. Both versions will contain a \$1 off admission coupon to the show.

#### US MAILINGS:

We have some **extra stamped postcards**. You can send some to your friends, relatives, etc. First, you need to be able to come to the Feb. 14th Educational Meeting, to pick them up. Second, you need to e-mail me before the Feb. 14th mtg. or tell Jon North during the meeting the following information:

- Last name of person
- Name of Street

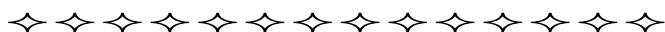
Do not give us the total mailing address, as **you** will be addressing the postcards!

We will check the name against our master list of 1500 names, to be sure we are not already mailing the person a postcard. If the name(s) is not on our list, you will receive a postcard(s) so you can address and send them.

#### E-MAILINGS:

In late February, we will e-mail you the e-mail version of the postcard, which you can forward to friends, relatives, etc regarding the show on March 24,25. (It is exactly the same as the postcard and has a \$1.00 off coupon deal.)

*Florence Brady, RRR Secretary*



### Things a Real Rockhound Would Never Say

- I went to Quartzsite and didn't find anything that I liked.
- No, I really don't want to see that 70 pound chunk of blue lace agate that you have in your van.
- Fossil hunting...yuck. All the dirt and the dust and all you ever find are dirty old rocks.
- I just have too many rocks in my yard. Some of them have to go into the dumpster.

*via The Telephone City Crystal 3/11*

### Silent Auctions (Club and Show)

I want to thank Eric and Deborah Anspaugh for conducting the January auction. It was very successful and the club made a nice deposit into the treasury. We'll go again in February.

You all need to be thinking about the needs for the upcoming show in March and our oral auction in April. Whether you have an old piece of jewelry you no longer wear or something extra you have just created, please consider donating it to the raffle or silent auction.

If you have a business contact who might make a donation to the raffle (hardware item, art work, overnight stay, restaurant meal) please let the club know.

*-- Hugh Brady, Club Auctioneer*



### Are You Afraid to Open Your Closet

**for fear of causing a rock slide?** Do you have boxes and bins under a table in your rock room? Are you looking for some way to make more space in your house and at the same time help make the Annual Show a success?

If you answered **YES** to any of these questions, perhaps you should think about donating your excess rocks, rough, specimens, etc. to the Show Silent Auction. Each year the Silent Auction is a beehive of activity with young and old alike adding to their collections or finding that piece of rough for the perfect cabochon.

*By Mike O'Toole in the Calgary Lapidary Journal 2/10*

*[Editor's note: This from another club, talking about their show, but I thought their write-up said exactly what we want to say to our members!]*

## A "CO-OP MEMBER" FIELD TRIP TO YERINGTON, NV AREA

- This trip is open to all rockhounds who agree to abide by the AFMS Code of Ethics, the directions of the field trip leader and practice safe rock hounding.
- Call the field trip leader beforehand to sign up and for further information.
- Remember to wear your name badge and sign in with the field trip leader.
- CO-OP website has information: [www.ourfieldtrips.org](http://www.ourfieldtrips.org) (Password is needed).
- A Consent and Assumption of Risk Waiver of Liability form must be signed upon arrival at meeting site.
- Insurance Requirements: All field trip attendees must contact the field trip leader before the field trip regarding insurance requirements.

**TRIP LOCATION** - Minnesota Iron Mine- near Yerington, NV

### TRIP DIFFICULTY RATING SCALE

**Vehicle Access & Parking** - #3-4 vehicle access and parking good for most vehicles and RV's, no specific handicap parking.

**Collection or View Site** - # 3-4 flat ground, unpaved sections, handicap access with some help.

**WHEN** - March 10, 2012 (Alternate Date: March 31, 2012)

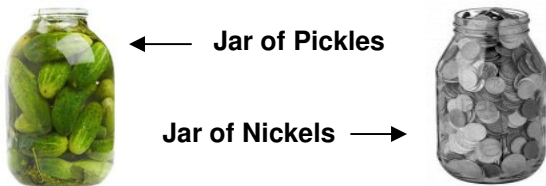
**SPONSOR CLUB** - Sacramento Mineral Society

**LEADER & CONTACT INFO** - Joe Shook

**CO-OP website has information:**  
[www.ourfieldtrips.org](http://www.ourfieldtrips.org) (Password is needed).



## CFMS Endowment Fundraising Drive



That's not too much now, is it? Piece of cake! So let's see who can raise the most nickels, maybe we'll make a contest out of it with the winner having bragging rights? Maybe, something more...hmmmm?

-- CJ Quitarano, CFMS Endowment Fund Chair

You heard about the 1 million pennies that Ray Meisenheimer raised a few years back? Well, this year I would like to kick it up a notch by raising half a million nickels! That would be \$25,000 for the CFMS Endowment Fund! So, beginning with your very next meeting, place a collection jar or box, or whatever, somewhere prominent (I find the goodies table to be a great place, everyone goes there). Then let your members know to put all of their nickels in the jar. It doesn't have to be just nickels; any denomination will do! The goal here is to collect \$25,000, an amount equivalent to 500,000 in nickels!

It might seem like a lot, but with over 100 CFMS clubs and societies, that would only equal about \$250 per club!

### The California Federation of Mineralogical Societies ENDOWMENT FUND

Founded June 28, 1987 by CFMS Directors in Convention, Turlock, California

The CFMS Endowment Fund was formed to provide a stable source of income to financially assist the programs and services the CFMS provides to its members. All donations remain as principal and only earnings are available for distribution to the CFMS.

[www.cfmsinc.org/forms10/endow/endfund.htm](http://www.cfmsinc.org/forms10/endow/endfund.htm)

The Mother Lode Mineral Society of California

# ROCK & GEM SHOW

**March 10th & 11th**

Saturday & Sunday 10am to 5pm

Admission \$6.00 adults, 12 & under free  
with paid adult

- NEW Jurassic Park Display
- Dinosaur & Fossil Exhibits
- Gem & Mineral Dealers
- Jewelry, Beads & Tools
- Demonstrations
- Great Food
- Education Exhibits
- Fluorescent Display
- Kids Activities



**Stanislaus Fairgrounds in Turlock**

900 North Broadway Turlock, CA

[www.turlockgemshow.com](http://www.turlockgemshow.com)

Contact: Bud & Terry McMillin 209-524-3494

The Roseville Rock Rollers Gem and Mineral Society

presents our **50<sup>th</sup> Annual**

"NATURE'S WONDERS"

# Gem and Mineral Show



**March 24 & 25, 2012**

Saturday 10 am - 5 pm Sunday 10 am - 4 pm

Roseville (Placer County) Fairgrounds

800 All America City Blvd., Roseville, CA

- \* CRYSTALS \* JEWELRY \* MINERALS \* GOLD \*
- \* BEADS \* FOSSILS \* GEMSTONES \*
- \* DEMONSTRATIONS \* EXHIBITS \* ROCK AUCTIONS \*
- \* YOUTH ACTIVITIES \* FOOD \* RAFFLES \*

GENERAL ADMISSION \$6.00  
SENIORS 60+ \$5.00, 12 AND UNDER FREE

FAIRGROUNDS PARKING FEE - \$5.00

Maps, directions, information:

[www.rockrollers.com](http://www.rockrollers.com)


OR PHONE 530-367-5108

**\$1 off admission price with this COUPON**

## February Calendar

Birthstone: Amethyst



Sun	Mon	Tues	Weds	Thurs	Fri	Sat
			1 Lapidary Shop 5:30-9:00 pm	2 Lapidary Shop 5:00-9:00 pm	3	4 Lapidary Shop 9:00 am - 3:00 pm
5	6 Lapidary Shop 5:00-9:00 pm	7	8 Lapidary Shop 5:30-9:00 pm	9 Lapidary Shop 5:00-9:00 pm	10	11 Chain Maille Classes: Beginning 10:00 am, Advanced 1:00 pm
12	13 Lapidary Shop 5:00-9:00 pm	14 Meetings: Rookies 5:30 pm Club 7:00 pm	15 Lapidary Shop 5:30-9:00 pm	16 Lapidary Shop 5:00-9:00 pm	17	18 <b>WORK PARTIES</b> Kids Junction & Silent Auction 9 am.
19	20  Lapidary Shop 5:00-9:00 pm	21 Show Meeting 6:30 pm	22 Lapidary Shop 5:30-9:00 pm Silver Wire Cab Setting 6:00 pm	23 Lapidary Shop 5:00-9:00 pm	24	25
26	27 Lapidary Shop 5:00-9:00 pm	28 Board Meeting 7:00 pm	29 Lapidary Shop 5:30-9:00 pm	For more class information, contact Class Coordinator: Teresa Johnson 916-929-0701 or email: classesforrockrollers@gmail.com		

## Upcoming CO-OP Member and Other Field Trips

(Contact your club's field trip leader for further information and revisions. CO-OP website also has information: [www.ourfieldtrips.org](http://www.ourfieldtrips.org)). All non-CFMS members must have proof of personal liability insurance (renters or homeowners policy). These trips are open to all rockhounds who agree to abide by the AFMS Code of Ethics, the directions of the field trip leader and practice safe rockhounding.

March 10	Alt. date, March 31. Yerington, NV area for verdi antique. <i>Sacramento Mineral Society</i> , Joe Shook.
April 5-8	Topaz Mt. & Dugway Geode Beds, Delta, UT for topaz, red beryl, hematite crystals and geodes. <i>CFMS Field Trips North</i> , Jim Barton.
May 19, 20	Fernley & Yerington areas, NV for agate, jasper, Verdi antique, copper minerals, selenite crystals. <i>Nevada Co. G &amp; M Society</i> , Vicki Black and Terry Bartels.
June 13-16	Tri-Federation to Vale area, OR for petrified wood, plume agates, jaspers. <i>AFMS/CFMS/NFMS</i> , Doug True, <a href="mailto:dtruefossils@yahoo.com">dtruefossils@yahoo.com</a>
June 16,17	Malakoff Diggins SHP for a guided tour, gold panning. <i>Roseville Rock Rollers, CO-OP, CFMS North</i> , Gordon Standlee and Jim Barton.
June 23	Monitor Pass for crystals in rhyolite. <i>Calaveras G &amp; M Society</i> , Bob Young. (Alt. date, July 7, 2012.)
Aug. 4, 5	Monitor Valley, Pete's Summit near Austin, NV for fossils. <i>Fossils for Fun Society</i> , Vicki Black and Terry Bartels.
Oct. 6, 7	Nightingale Mine and vicinity (NE Fernley, NV) for minerals, epidote, garnet, calcite, clinzoisite. <i>Sutter Buttes G &amp; M Society</i> , Gerald Hill.
<b>Check this page in the bulletin each month for more trips &amp; updated information.</b>	



## Upcoming Northern California Shows

### March 2-4: NEWARK, CA

Mineral & Gem Society of Castro Valley  
Newark Pavilion, 6430 Thornton Avenue  
Hours: Fri. & Sat. 10 - 6; Sun. 10 - 5  
Contact: Cathy Miller, (510) 887-9007  
Email: [info@mgscv.org](mailto:info@mgscv.org), Website: [www.mgscv.org](http://www.mgscv.org)

### March 10-11: SALINAS (Spreckels), CA

Salinas Valley Rock & Gem Club  
Veteran's Hall, Spreckels, CA, 5th & Llano St.  
Hours: 10 - 5 daily  
Contact: Robert L. Braun, (831) 771-2089

### March 10-11: TURLOCK, CA

Mother Lode Mineral Society  
Turlock Fairgrounds, 900 North Broadway  
Hours: Hours 10 - 5 daily  
Contact: Terry & Bud McMillin, (209) 524-3494  
Email: [bud.mcmillin.b7y@statefarm.com](mailto:bud.mcmillin.b7y@statefarm.com)  
Website: [www.turlockgemshow.com](http://www.turlockgemshow.com)

### March 17-18: VALLEJO, CA

Vallejo Gem & Mineral Society  
Solano County Fairgrounds, McCormack Hall  
Hours: 10 - 5 daily  
Contact: Dan Wolke, (707) 644-9764  
Email: [VGMS01@yahoo.com](mailto:VGMS01@yahoo.com)  
Website: [www.vallejogemandmineral.com](http://www.vallejogemandmineral.com)

### March 24-25: ANGELS CAMP, CA

Calaveras Gem & Mineral Society  
Calaveras Co. Fairgrounds (Frog Town USA)  
101 Frogtown Road  
Hours: Sat 10 - 5; Sun 10 - 4  
Contact: Tak Iwata, (209) 928-5579  
Email: [Tak2me@msn.com](mailto:Tak2me@msn.com)  
Website: [www.calaverasgemandmineral.org](http://www.calaverasgemandmineral.org)

### March 24-25: ROSEVILLE, CA

Roseville Rock Rollers  
Roseville (Placer County) Fairgrounds  
800 All American City Blvd. (off Washington)  
Hours: Sat. 10 - 5; Sun. 10 - 4  
Contact: Gloria Marie, (916) 216-1114  
Email: [gloriarosevillerockrollers@gmail.com](mailto:gloriarosevillerockrollers@gmail.com)  
Website: [www.rockrollers.com](http://www.rockrollers.com)



### April 7 - 8: PARADISE, CA

Paradise Gem & Mineral Society  
Elks Lodge, 6309 Clark Road  
Hours: Sat 9 - 5 ; Sun 9 - 4  
Contact: Manuel Garcia, (530) 877-7324  
Email: [mmpg@att.net](mailto:mmpg@att.net)  
Website: [www.paradisegem.org](http://www.paradisegem.org)

ROSEVILLE ROCK ROLLERS GEM & MINERAL SOCIETY  
BULLETIN EDITOR  
P.O. BOX 212  
ROSEVILLE, CA 95678

Send exchange bulletins to  
above address



February 2012

**\* First Class Mail \***



the  
**ROLLIN'  
ROCK**

ROSEVILLE ROCK ROLLERS, INC.



MEMBER, CALIFORNIA FEDERATION OF MINERALOGICAL SOCIETIES  
MEMBER, AMERICAN FEDERATION OF MINERALOGICAL SOCIETIES  
VOL. 53 NO. 2 FEBRUARY 2012

EDUCATIONAL MEETING 2<sup>ND</sup> TUESDAY OF EACH MONTH, 7:00 PM  
EXECUTIVE BOARD MEETING 4<sup>TH</sup> TUESDAY OF EACH MONTH, 7:00 PM

EDUCATIONAL MEETING LOCATION: ROSEVILLE FAIRGROUNDS,  
GARDEN ROOM, 800 ALL AMERICA CITY BLVD., ROSEVILLE, CA

BOARD MEETING LOCATION: ROSEVILLE FAIRGROUNDS,  
LAPIDARY SHOP TRAILER BEYOND GATE "C" PARKING LOT

*Changes and exceptions will be published in the bulletin.*  
**GUESTS AND VISITORS ALWAYS WELCOME**